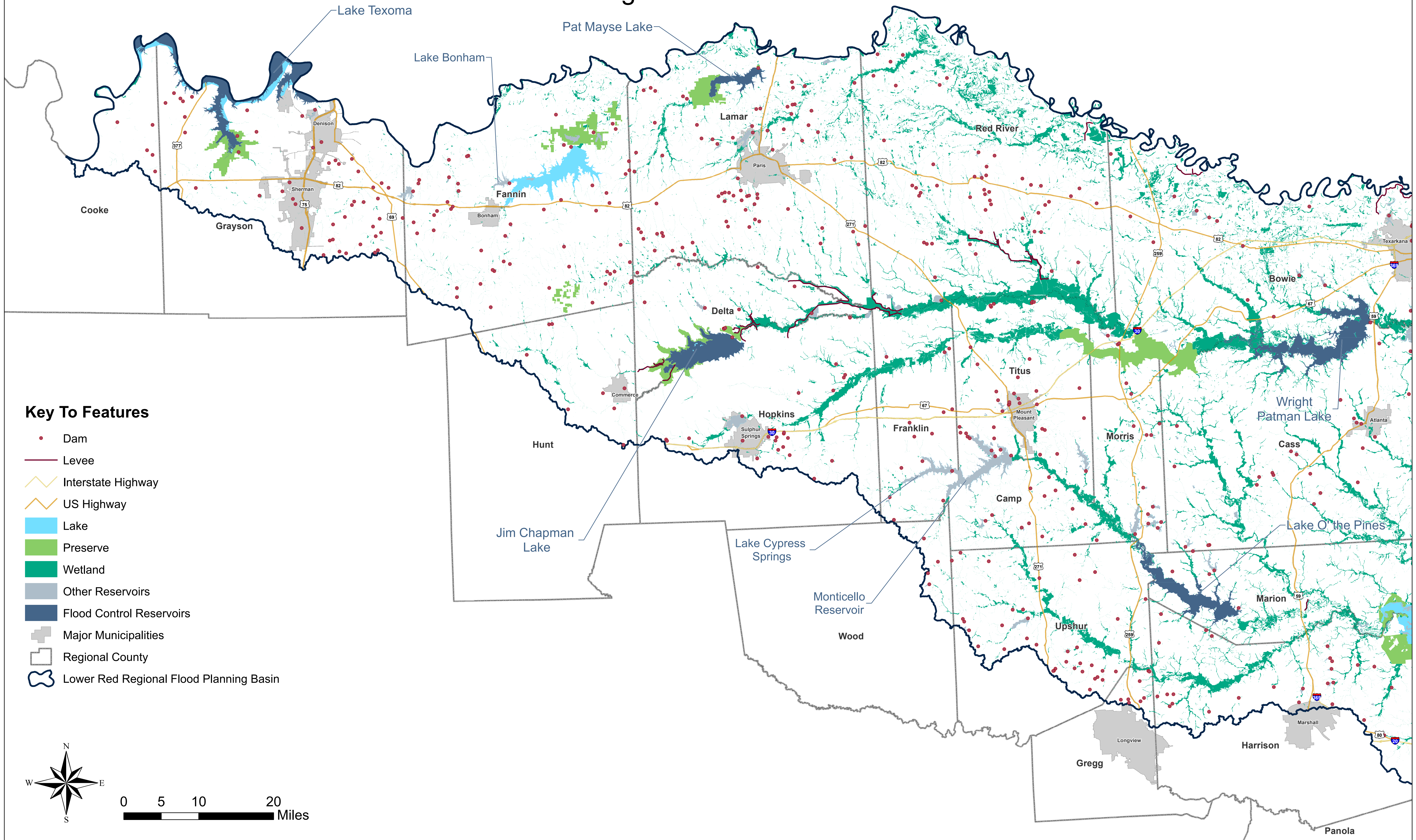
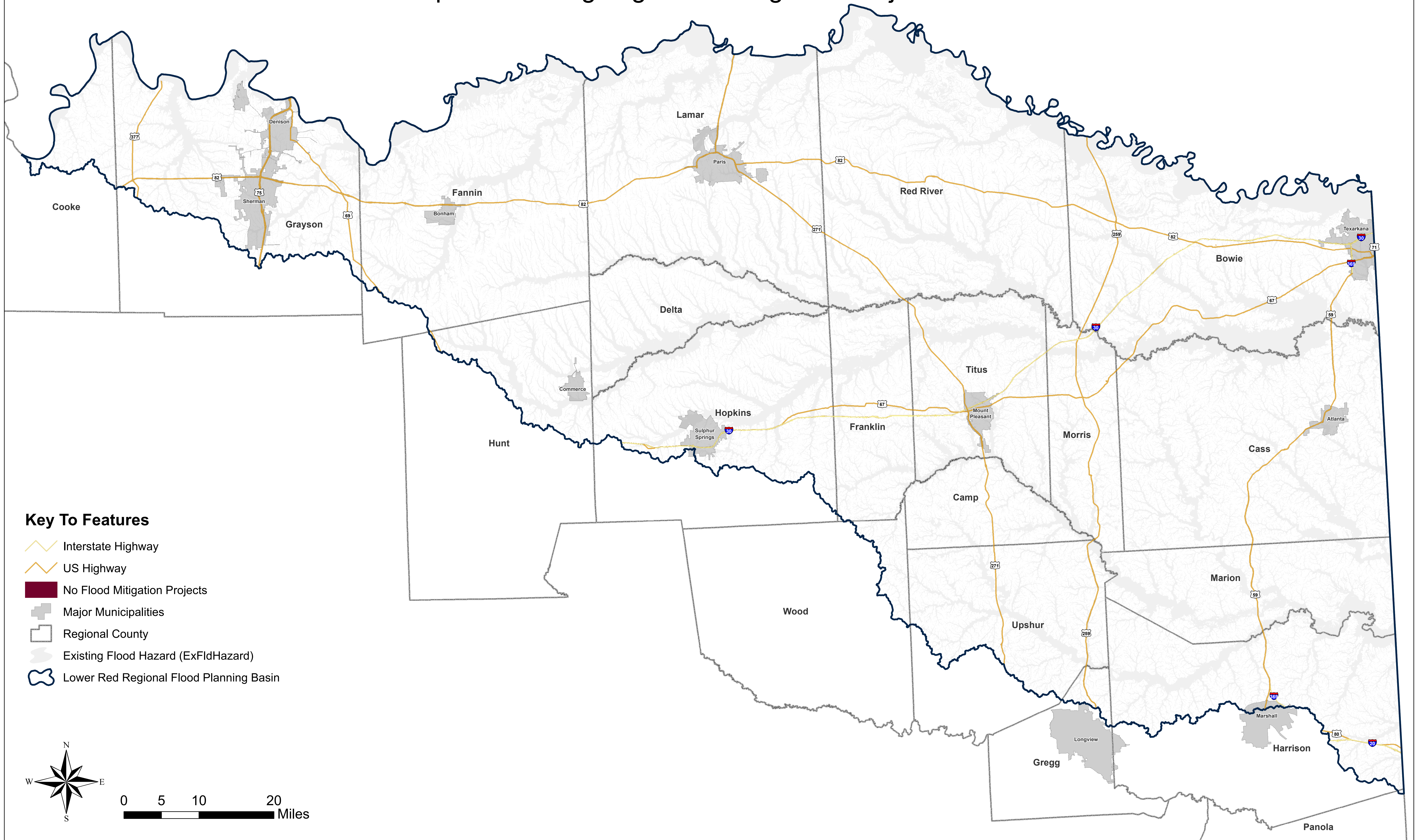


# Lower Red - Sulphur - Cypress Basin: Map 1 Existing Flood Infrastructure



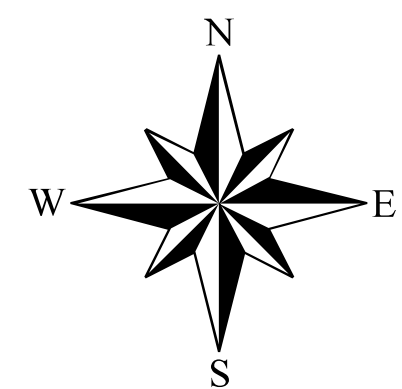
# Lower Red - Sulphur - Cypress Basin: Map 2

## Proposed or Ongoing Flood Mitigation Projects- None



### Key To Features

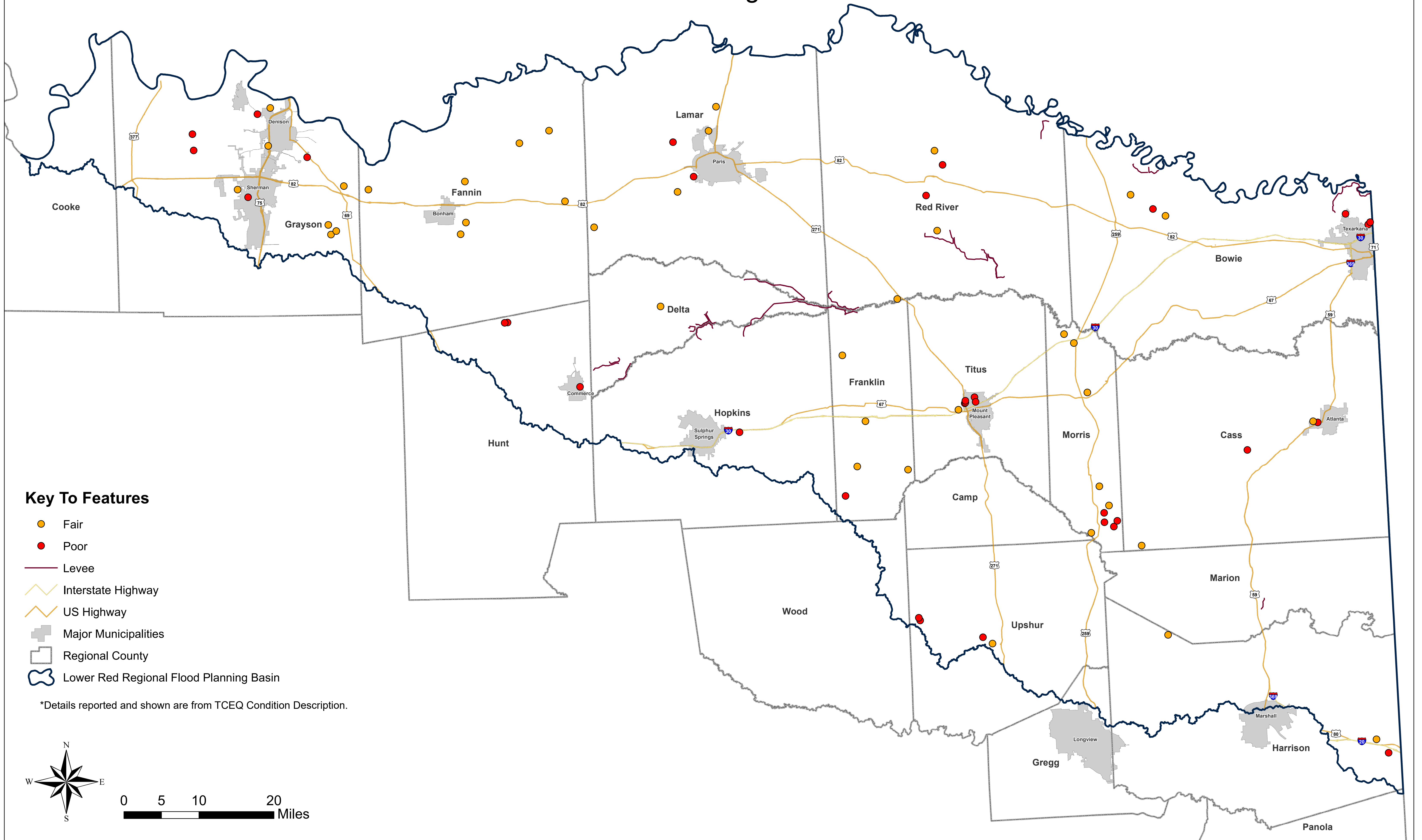
- Interstate Highway
- US Highway
- No Flood Mitigation Projects
- Major Municipalities
- Regional County
- Existing Flood Hazard (ExFldHazard)
- Lower Red Regional Flood Planning Basin



0 5 10 20 Miles

# Lower Red - Sulphur - Cypress Basin: Map 3

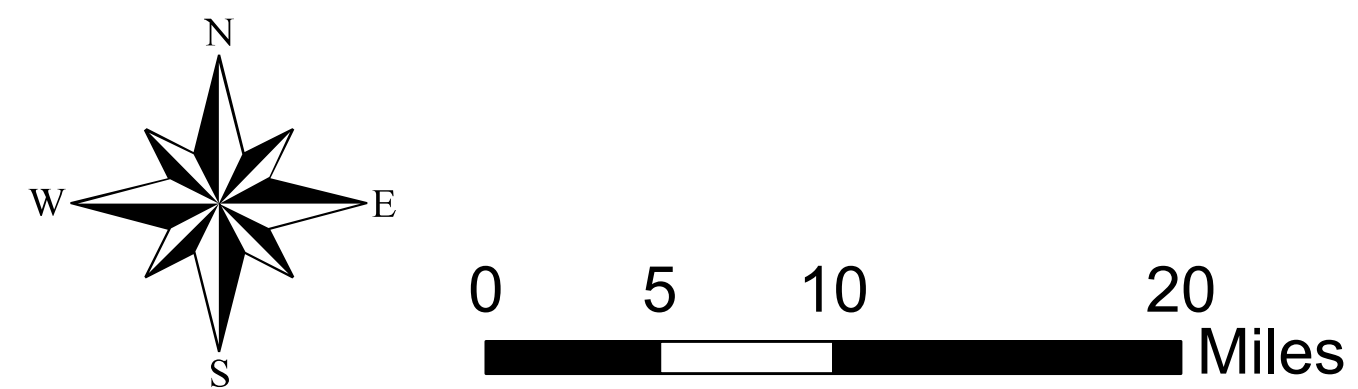
## Non- Functional or Deficient Flood Mitigation Features or Infrastructure



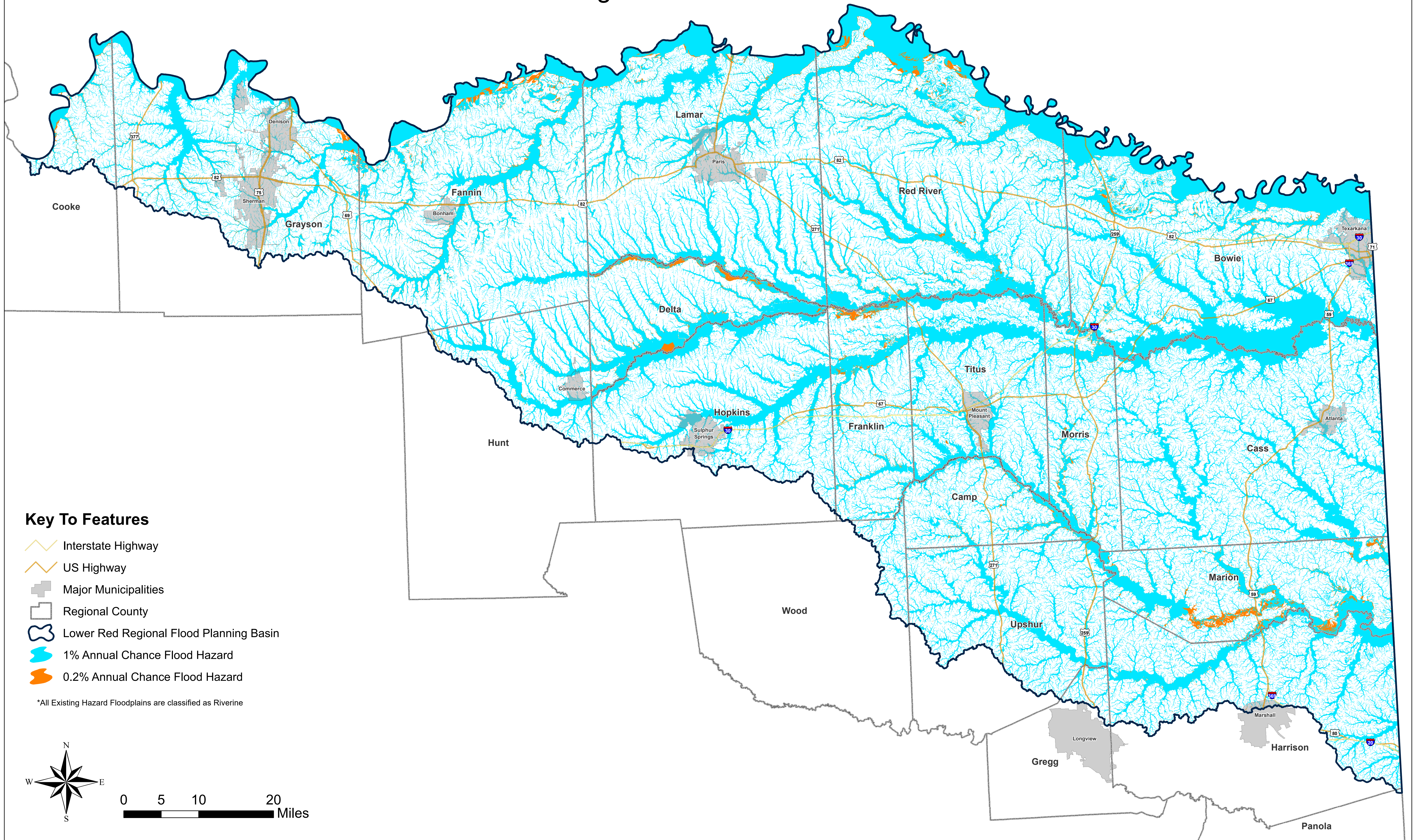
### Key To Features

- Fair
- Poor
- Levee
- Interstate Highway
- US Highway
- Major Municipalities
- Regional County
- Lower Red Regional Flood Planning Basin

\*Details reported and shown are from TCEQ Condition Description.

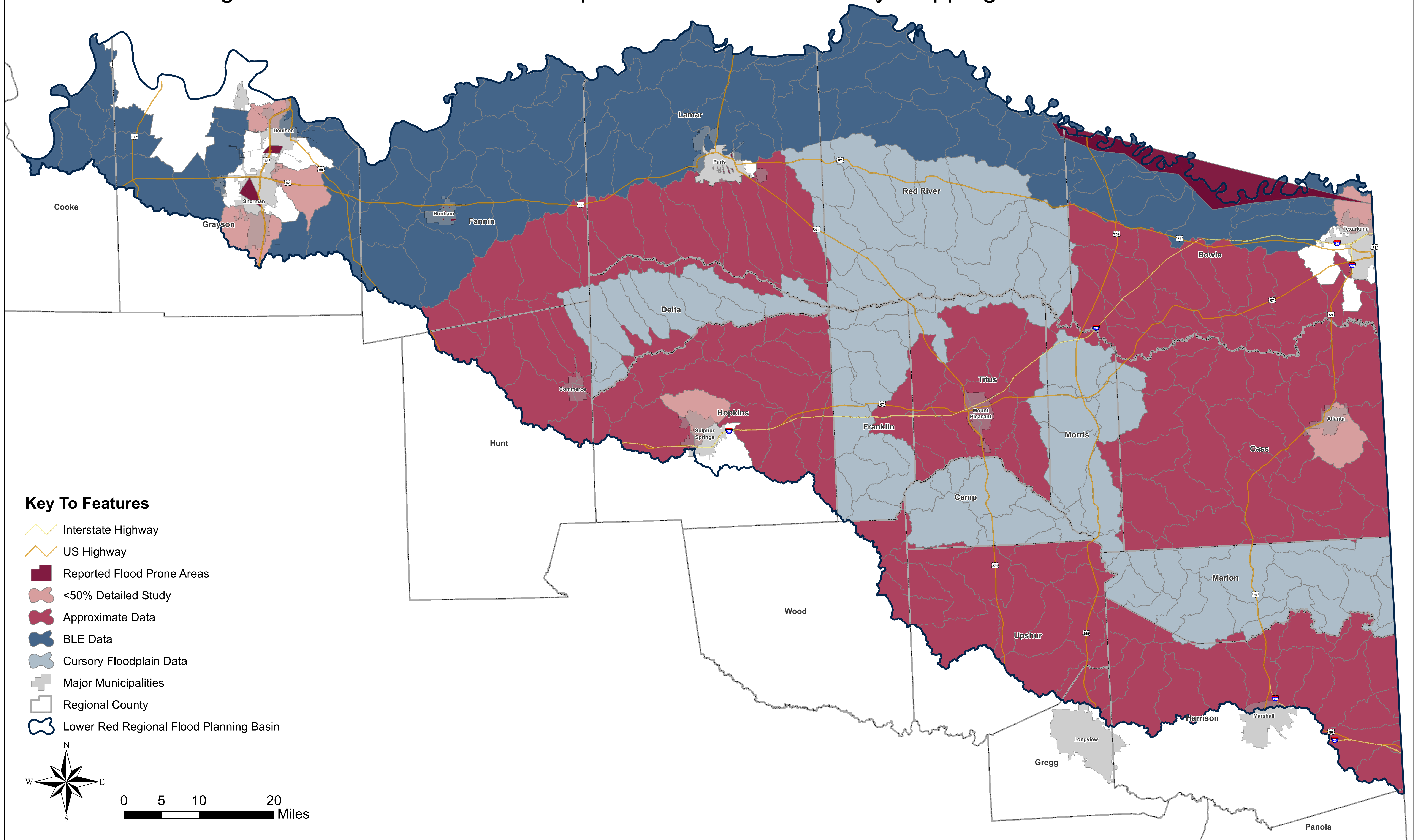


# Lower Red - Sulphur - Cypress Basin: Map 4 Existing Condition Flood Hazard

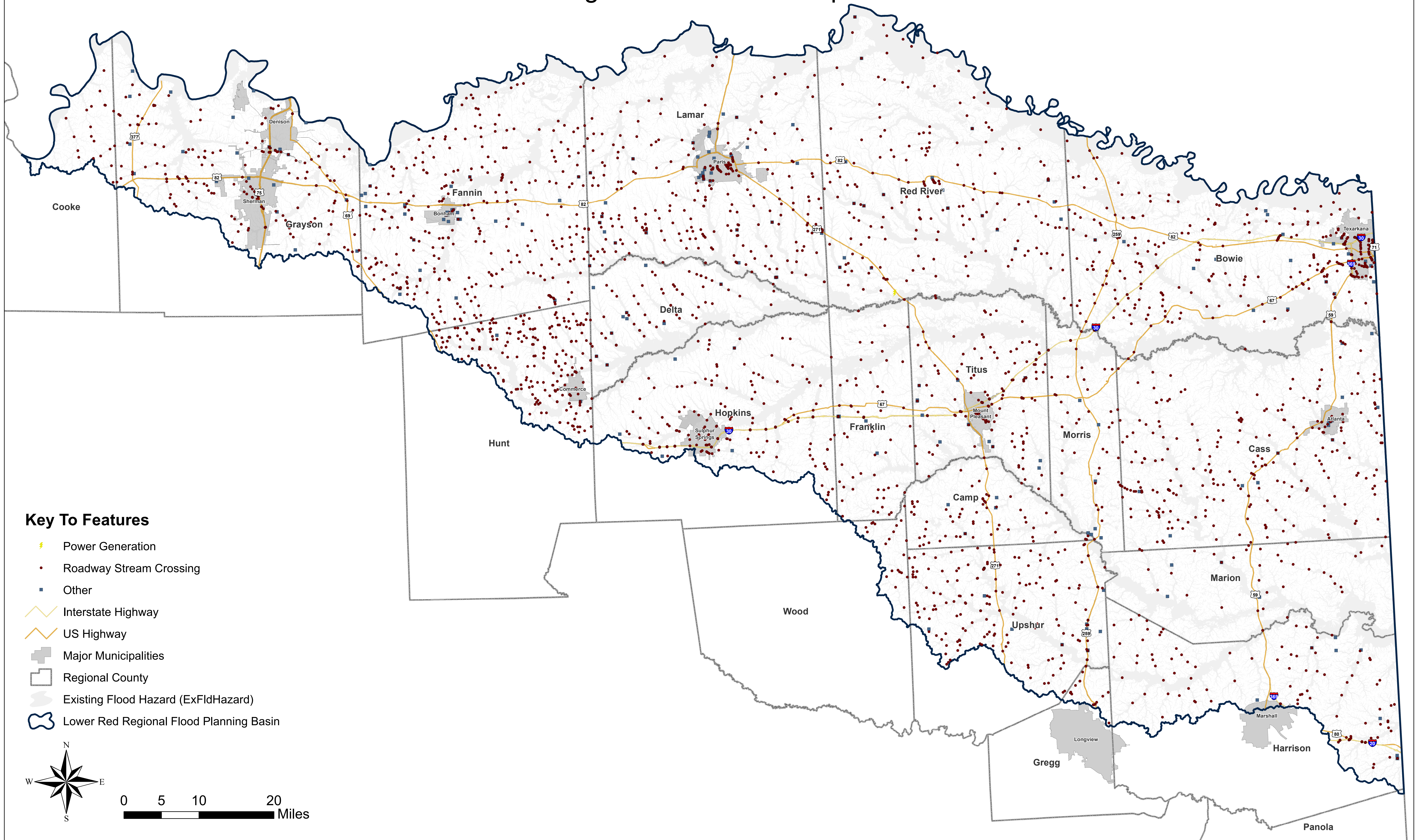


# Lower Red - Sulphur - Cypress Basin: Map 5

## Existing Condition Flood Hazard - Gaps in Inundation Boundary Mapping and Flood Prone Areas

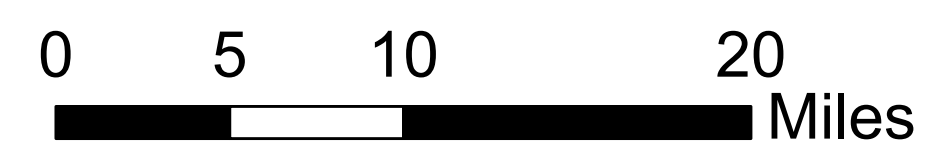
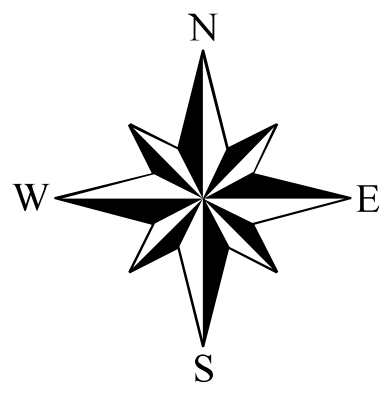


# Lower Red - Sulphur - Cypress Basin: Map 6A Existing Condition Flood Exposure



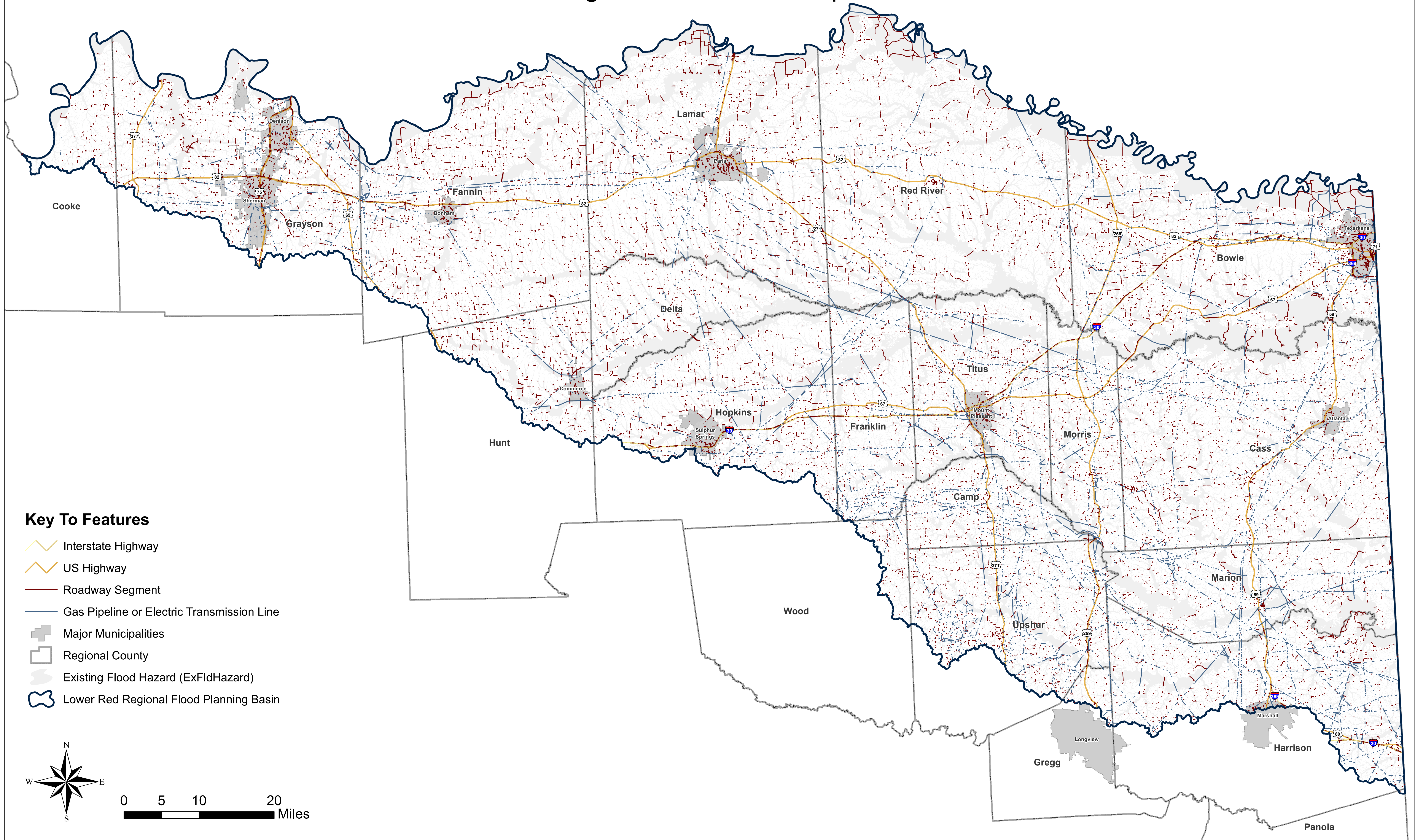
## Key To Features

- ⚡ Power Generation
- Roadway Stream Crossing
- Other
- 🛣 Interstate Highway
- 🛣 US Highway
- 🏠 Major Municipalities
- 🗺 Regional County
- 🌫 Existing Flood Hazard (ExFldHazard)
- 🌊 Lower Red Regional Flood Planning Basin



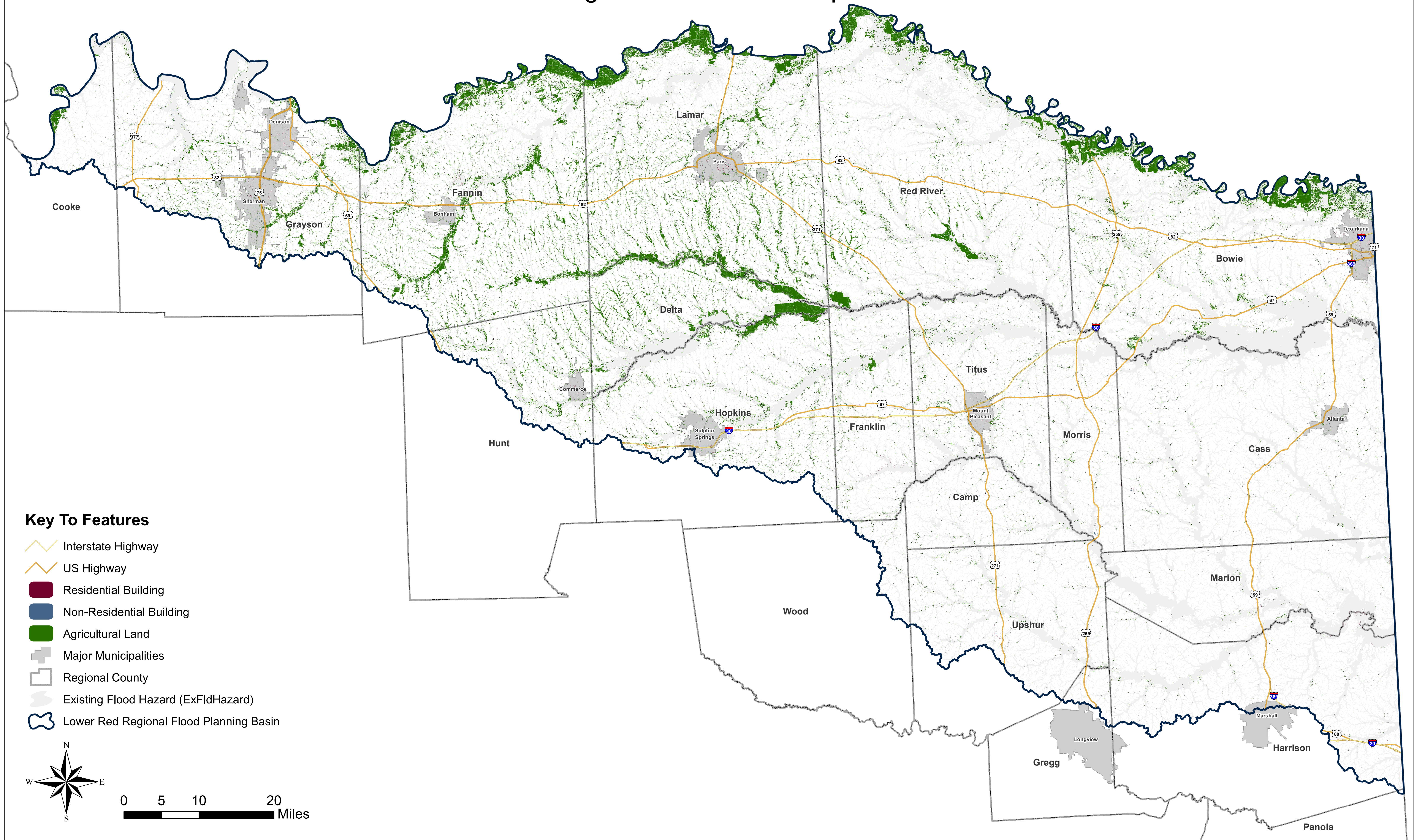
# Lower Red - Sulphur - Cypress Basin: Map 6B

## Existing Condition Flood Exposure



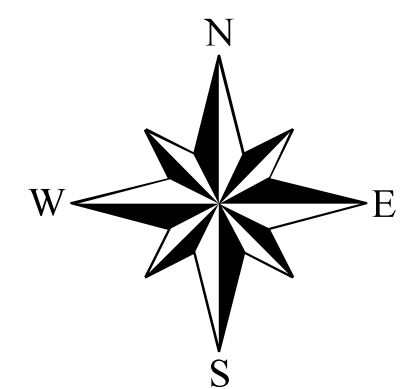
# Lower Red - Sulphur - Cypress Basin: Map 6C

## Existing Condition Flood Exposure



### Key To Features

- Interstate Highway
- US Highway
- Residential Building
- Non-Residential Building
- Agricultural Land
- Major Municipalities
- Regional County
- Existing Flood Hazard (ExFldHazard)
- Lower Red Regional Flood Planning Basin

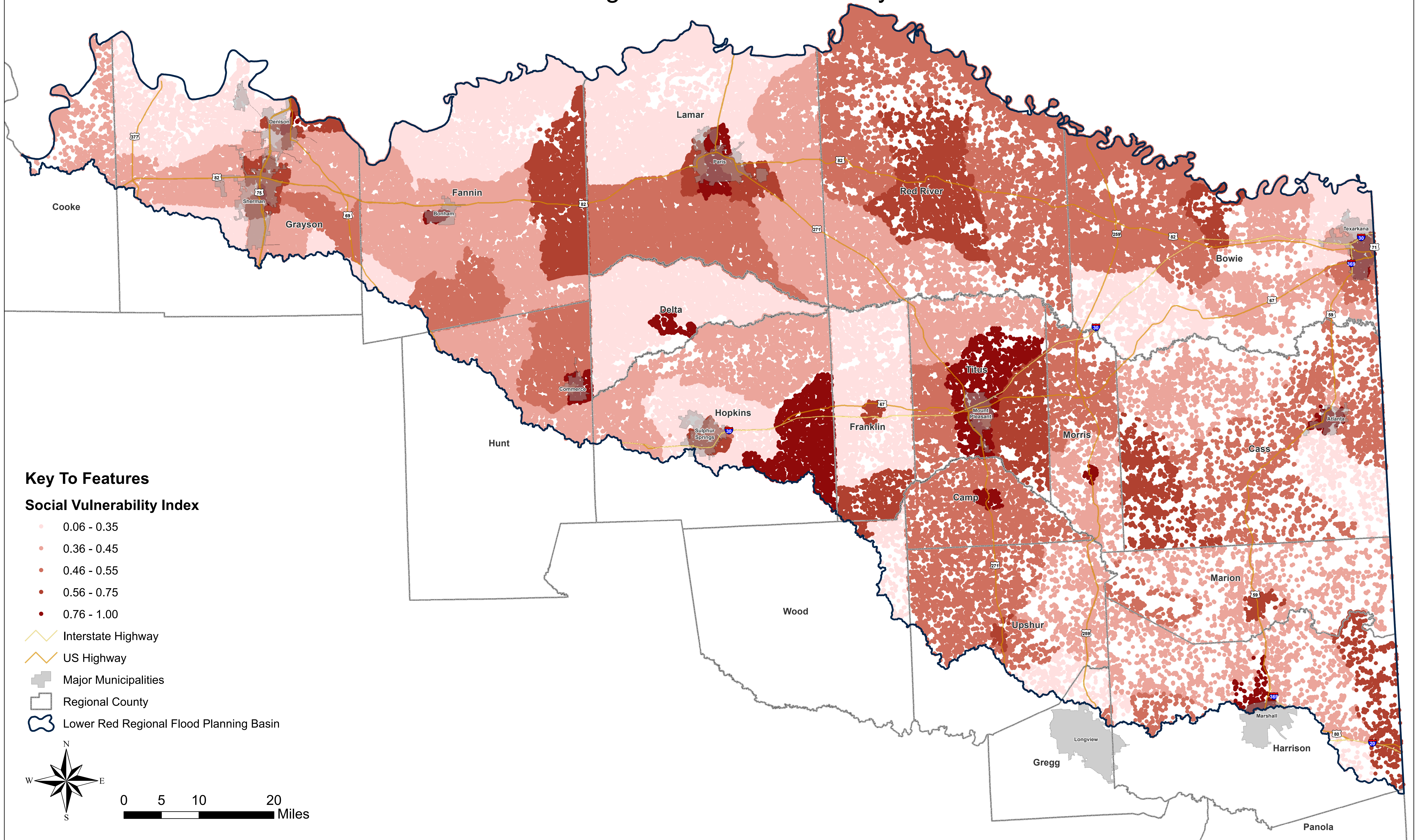


0 5 10 20 Miles



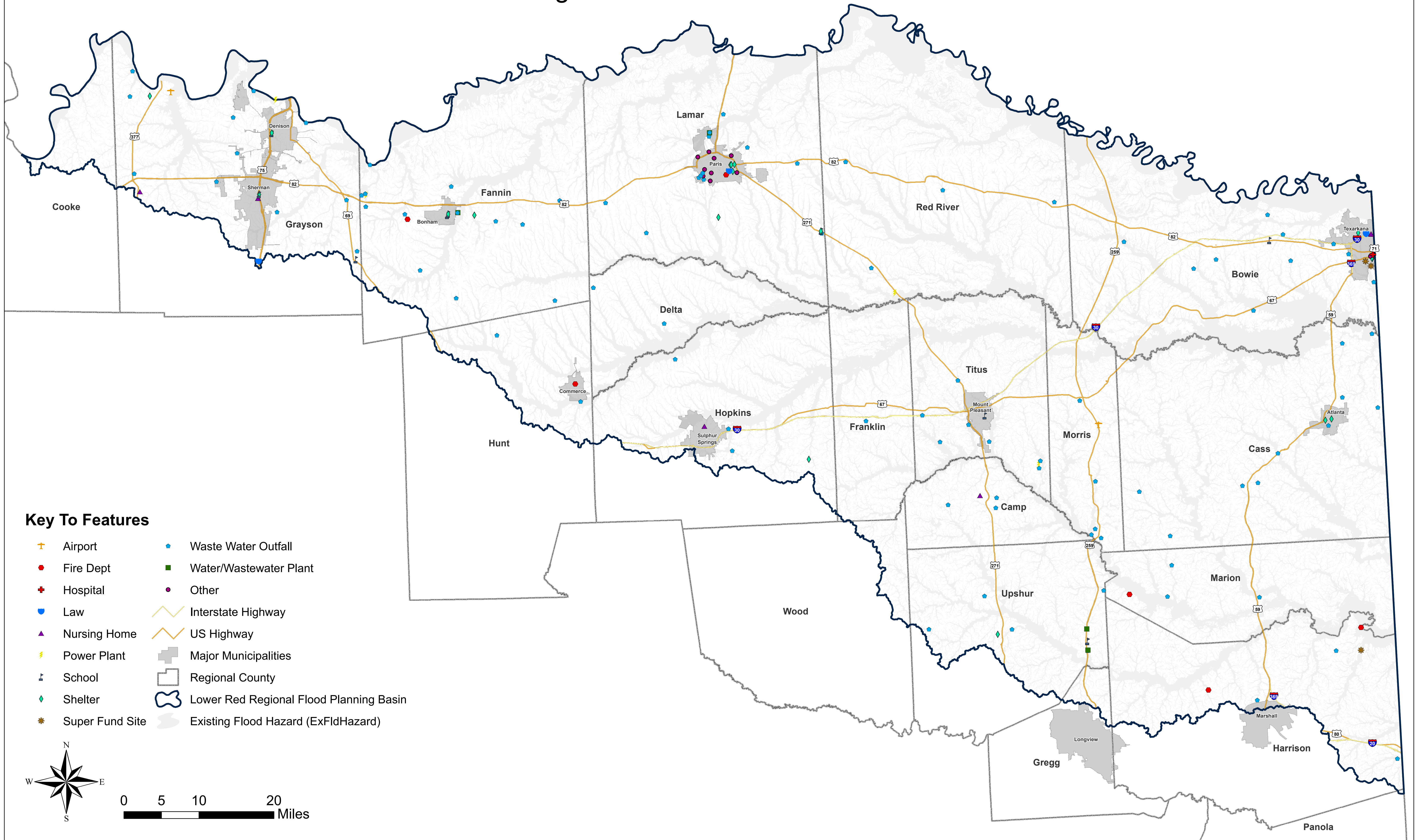
# Lower Red - Sulphur - Cypress Basin: Map 7A

## Existing Condition Vulnerability



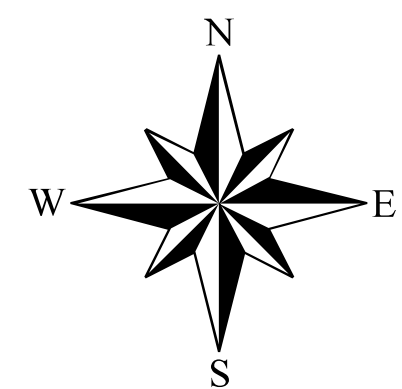
# Lower Red - Sulphur - Cypress Basin: Map 7B

## Existing Condition Critical Infrastructure

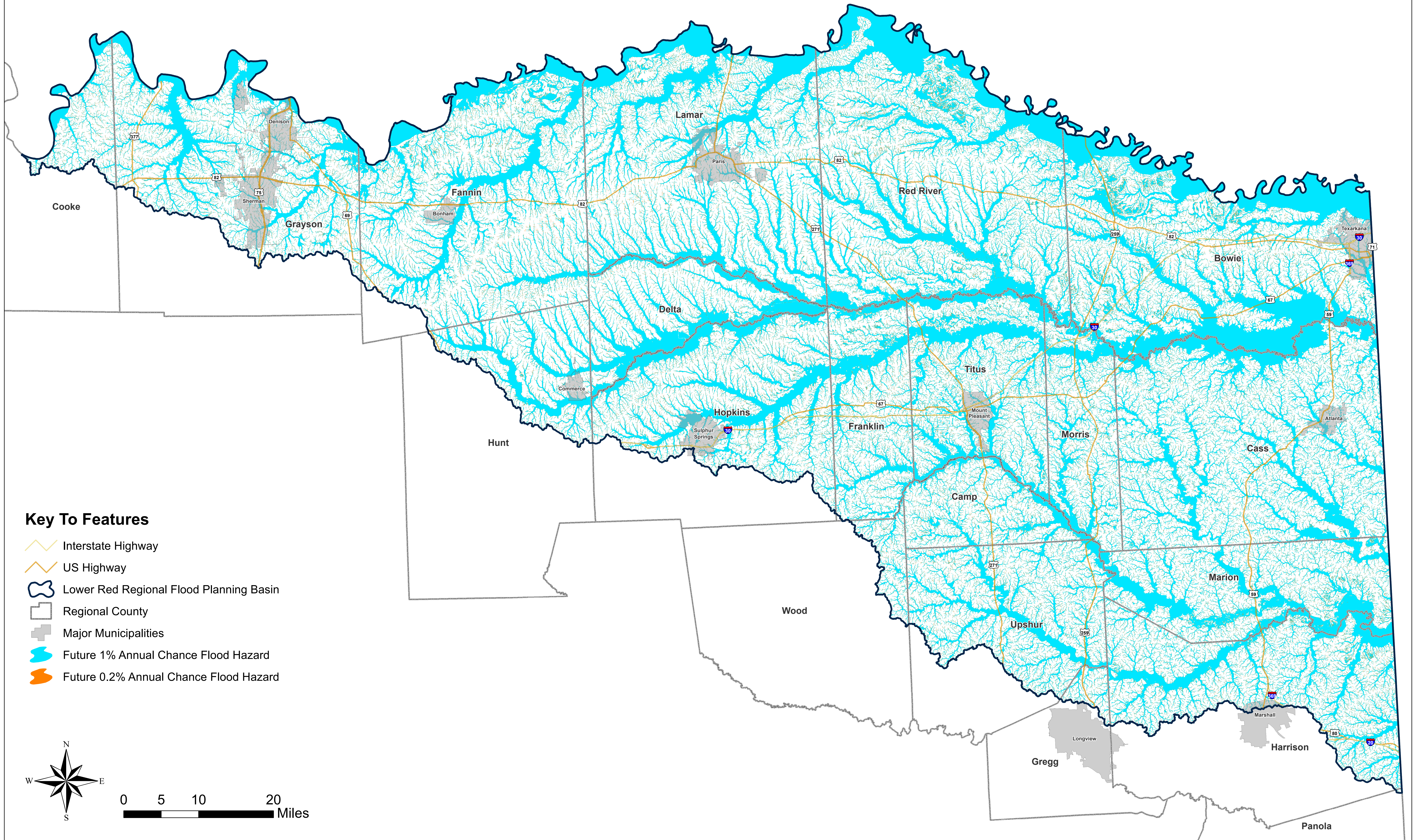


### Key To Features

- |                 |   |
|-----------------|---|
| Airport         | Waste Water Outfall                     |
| Fire Dept       | Water/Wastewater Plant                  |
| Hospital        | Other                                   |
| Law             | Interstate Highway                      |
| Nursing Home    | US Highway                              |
| Power Plant     | Major Municipalities                    |
| School          | Regional County                         |
| Shelter         | Lower Red Regional Flood Planning Basin |
| Super Fund Site | Existing Flood Hazard (ExFldHazard)     |

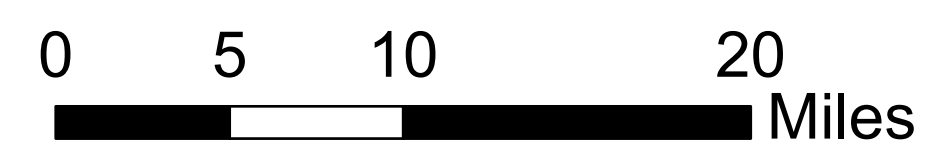
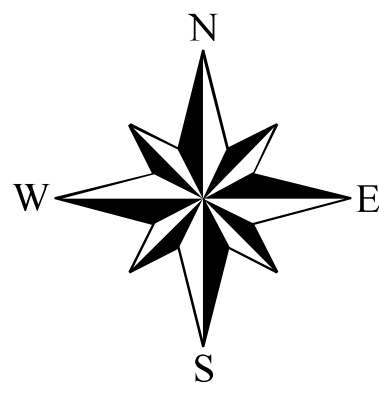


# Lower Red - Sulphur - Cypress Basin: Map 8 Future Condition Flood Hazard



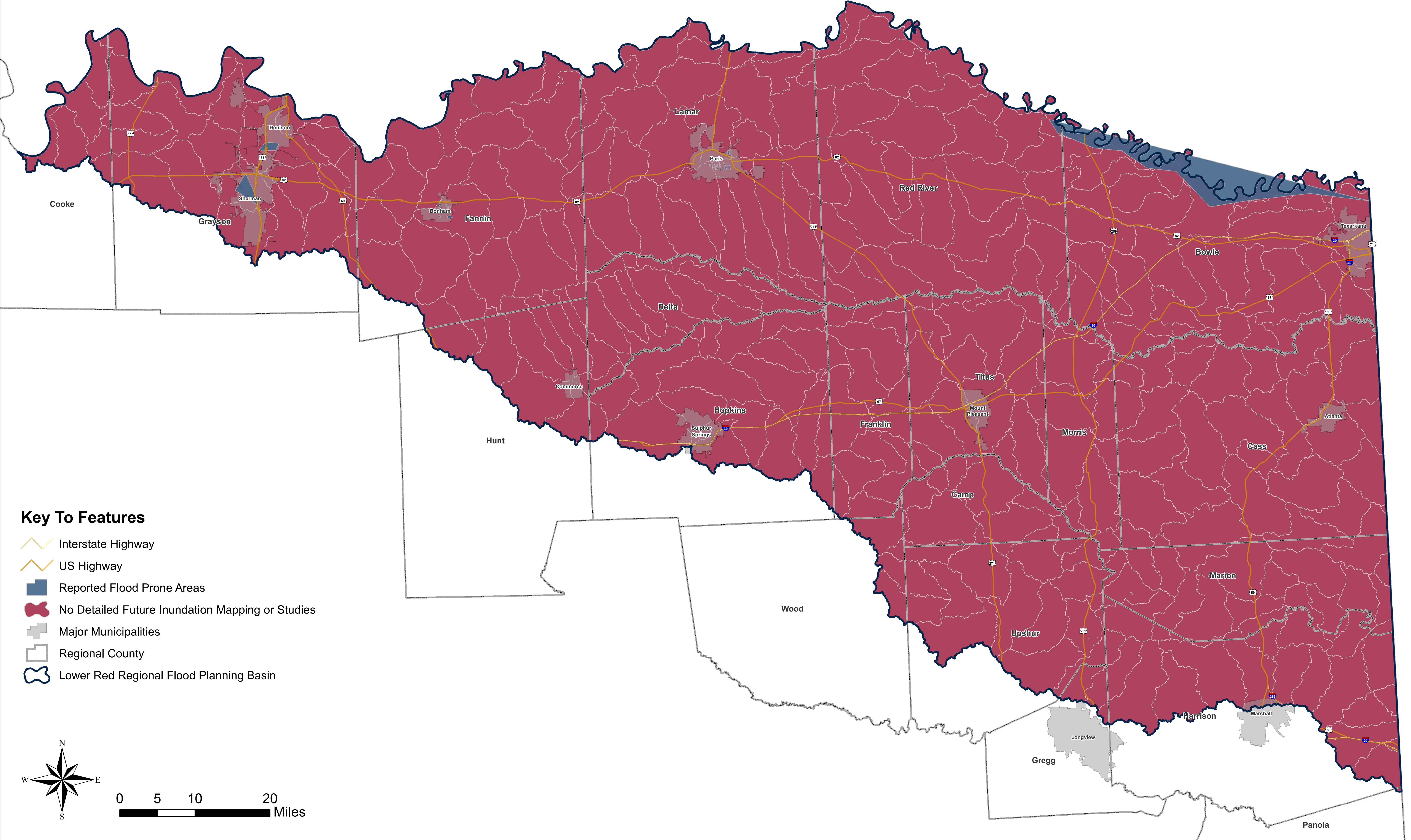
## Key To Features

- Interstate Highway
- US Highway
- Lower Red Regional Flood Planning Basin
- Regional County
- Major Municipalities
- Future 1% Annual Chance Flood Hazard
- Future 0.2% Annual Chance Flood Hazard

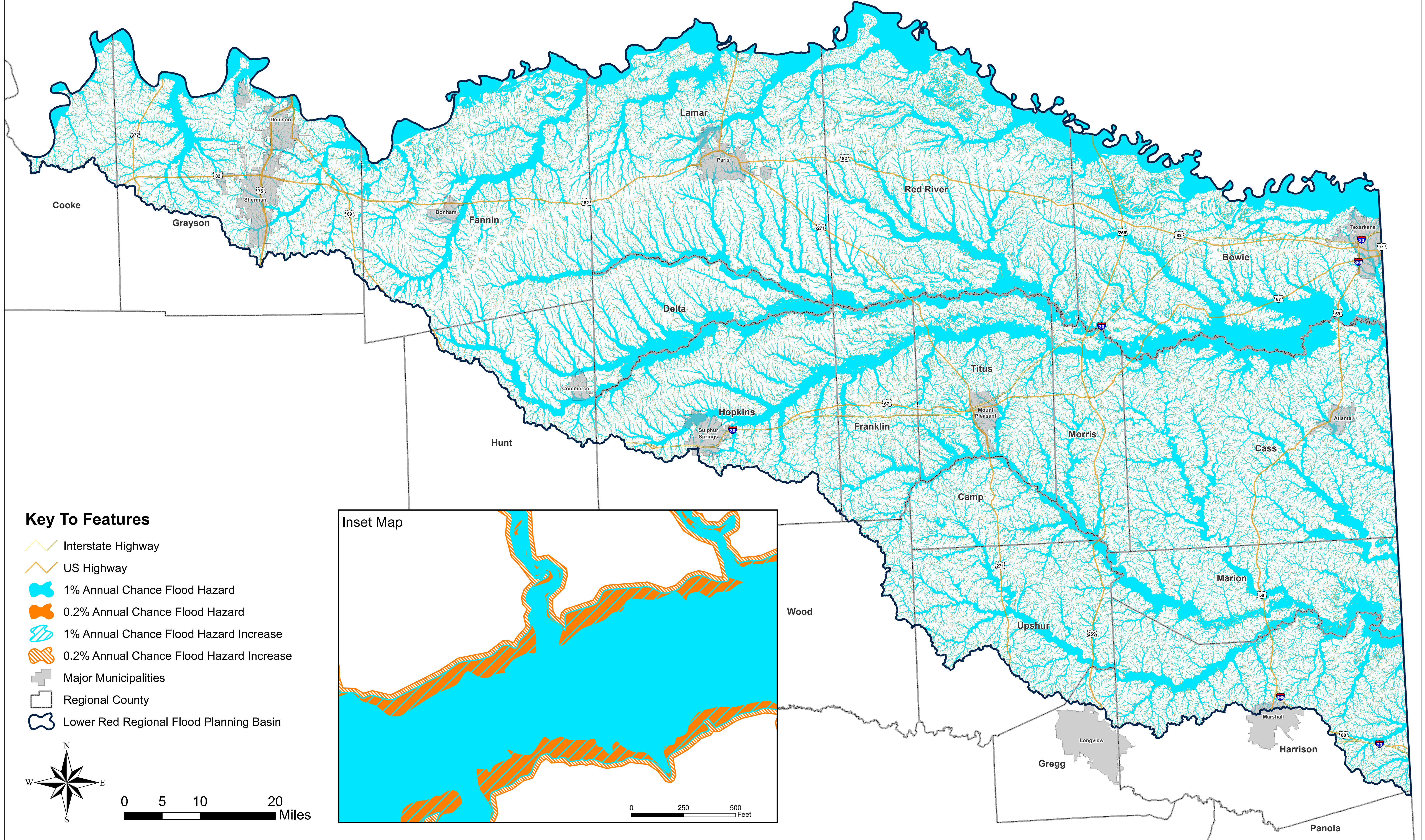


# Lower Red - Sulphur - Cypress Basin: Map 9










## Future Condition Flood Hazard - Gaps in Inundation Boundary Mapping and Flood Prone Areas



# Lower Red - Sulphur - Cypress Basin: Map 10 Extent of Increase of Flood Hazard



## Key To Features

-  Interstate Highway
-  US Highway
-  1% Annual Chance Flood Hazard
-  0.2% Annual Chance Flood Hazard
-  1% Annual Chance Flood Hazard Increase
-  0.2% Annual Chance Flood Hazard Increase
-  Major Municipalities
-  Regional County
-  Lower Red Regional Flood Planning Basin

