

TEXAS BOARD OF WATER ENGINEERS

Durwood Manford, Chairman  
R. M. Dixon, Member  
O. F. Dent , Member

BULLETIN 6015

WATER LEVELS IN OBSERVATION WELLS  
IN  
ATASCOSA AND FRIO COUNTIES, TEXAS  
1955 - 1960

Compiled by  
Jack Stearman  
Ground Water Division  
Texas Board of Water Engineers

Prepared in cooperation with the Geological Survey  
United States Department of the Interior

September 1960

THE UNIVERSITY OF CHICAGO

PHYSICS DEPARTMENT  
5712 S. UNIVERSITY AVENUE  
CHICAGO, ILLINOIS 60637

MEMORANDUM

TO : [Name]  
FROM : [Name]  
SUBJECT: [Subject]

[Text]

[Text]

[Text]

TABLE OF CONTENTS

	Page
Introduction -----	1
Water-Level Measurements in Atascosa County in Feet Below Land-Surface Datum -----	4
Water-Level Measurements in Frio County in Feet Below Land-Surface Datum -----	8

ILLUSTRATIONS

Observation Wells in Atascosa County, Texas -----	5
Graphs Showing Measured Water Levels in Two Wells in Atascosa County, and the Annual Precipitation at Poteet, Texas -----	6
Observation Wells in Frio County, Texas -----	9
Graphs Showing Measured Water Levels in Two Wells in Frio County, and the Annual Precipitation at Pearsall, Texas -----	10



WATER LEVELS IN OBSERVATION WELLS  
IN ATASCOSA AND FRIO COUNTIES, TEXAS  
1955 - 1960

INTRODUCTION

Periodic measurements of water levels are made in selected observation wells throughout the state as a part of an observation well program conducted cooperatively by the Texas Board of Water Engineers and the U. S. Geological Survey to evaluate the effects of ground-water development in relation to available supply.

This bulletin contains records of water levels in 30 observation wells in Atascosa County and in 21 observation wells in Frio County. The period of record is from 1955 through 1960.

Maps showing the location of the observation wells face the corresponding tables of water-level measurements. Hydrographs showing water levels in selected wells in Atascosa and Frio Counties follow the corresponding observation well location maps. Annual precipitation graphs for Poteet and Pearsall are combined with their respective hydrographs.



ATASCOSA COUNTY

WATER-LEVEL MEASUREMENTS IN ATASCOSA  
COUNTY IN FEET BELOW LAND-SURFACE DATUM

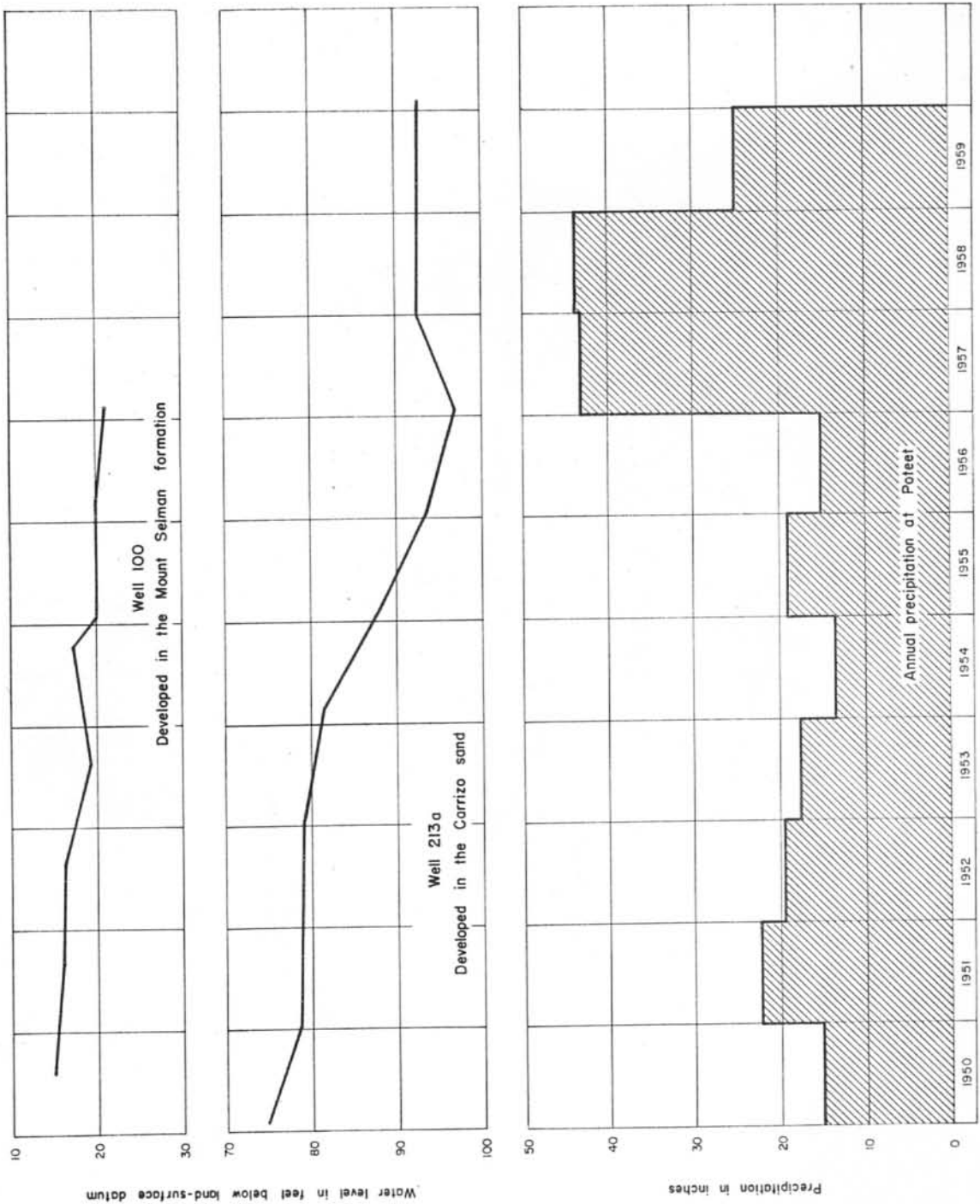
Well	1955		1956		1957		1958		1959		1960	
	Date	Level	Date	Level	Date	Level	Date	Level	Date	Level	Date	Level
1a	6/9	55.49	3/20	55.33	1/16	55.24	1/22	54.48	1/23	52.15	--	--
4	3/15	144.16	3/20	150.36	1/16	150.24	1/22	151.21	2/5	149.15	2/22	144.06
17	1/14	40.55	1/10	45.28	1/19	50.29	1/14	47.45	--	--	--	--
33	1/14	39.85	--	--	1/19	52.67	1/14	48.37	--	--	--	--
61	--	--	1/10	18.42	2/15	25.41	1/14	18.20	--	--	--	--
62	--	--	1/10	18.64	2/15	25.31	1/14	17.67	--	--	--	--
72	3/15	89.83	3/21	91.80	1/16	94.72	1/22	95.81	2/5	96.32	2/22	105.58
91	1/14	24.23	--	--	--	--	--	--	--	--	--	--
100	1/13	19.98	1/9	20.06	2/15	21.26	--	--	--	--	--	--
124	3/15	82.93	--	--	--	--	--	--	--	--	--	--
125	3/15	62.67	3/21	62.41	1/16	62.22	1/22	62.00	--	--	--	--
127	3/15	23.8	--	--	--	--	1/22	19.18	--	--	--	--
128	3/15	128.91	3/20	129.78	1/16	131.34	1/22	132.25	--	--	--	--
129	3/15	150.76	3/20	151.76	1/16	152.02	1/22	152.20	--	--	--	--
130	3/15	167.80	3/20	168.28	1/16	168.89	1/22	168.77	--	--	--	--
131	3/15	125.28	3/20	125.97	1/16	126.99	1/22	126.82	--	--	--	--
132	3/15	144.86	3/20	156.57	1/16	145.77	1/22	148.77	--	--	--	--
160	3/15	123.40	6/21	124.21	1/16	124.75	1/22	125.17	2/4	125.12	2/22	125.80
165	1/14	45.50	1/10	48.51	1/19	61.31	1/14	50.55	--	--	--	--
169a	1/13	84.11	1/9	85.84	1/15	88.62	1/15	89.56	--	--	--	--
177	1/14	12.17	1/10	16.80	1/17	26.99	1/14	22.54	--	--	--	--
187	1/14	55.26	1/10	59.20	1/15	64.70	1/14	61.66	--	--	--	--
196	1/14	28.14	--	--	--	--	--	--	--	--	--	--
209	1/14	44.77	1/10	47.55	1/15	53.27	1/14	48.67	--	--	--	--
213a	1/14	87.59	1/21	93.52	1/15	96.95	1/15	92.53	1/22	92.17	1/25	92.75
246	1/13	56.00	1/10	63.23	2/14	87.39	--	--	--	--	--	--
251	--	--	1/9	50.71	2/14	50.52	1/15	48.51	--	--	--	--
253	--	--	--	--	2/15	13.03	1/15	11.59	--	--	--	--
299	1/15	57.02	1/10	57.75	1/15	62.17	1/14	57.67	--	--	--	--
337	1/13	90.49	1/10	100.56	2/14	118.17	--	--	--	--	--	--





BASE MAP FROM TEXAS STATE HIGHWAY DEPARTMENT

OBSERVATION WELLS IN ATASCOSA COUNTY, TEXAS



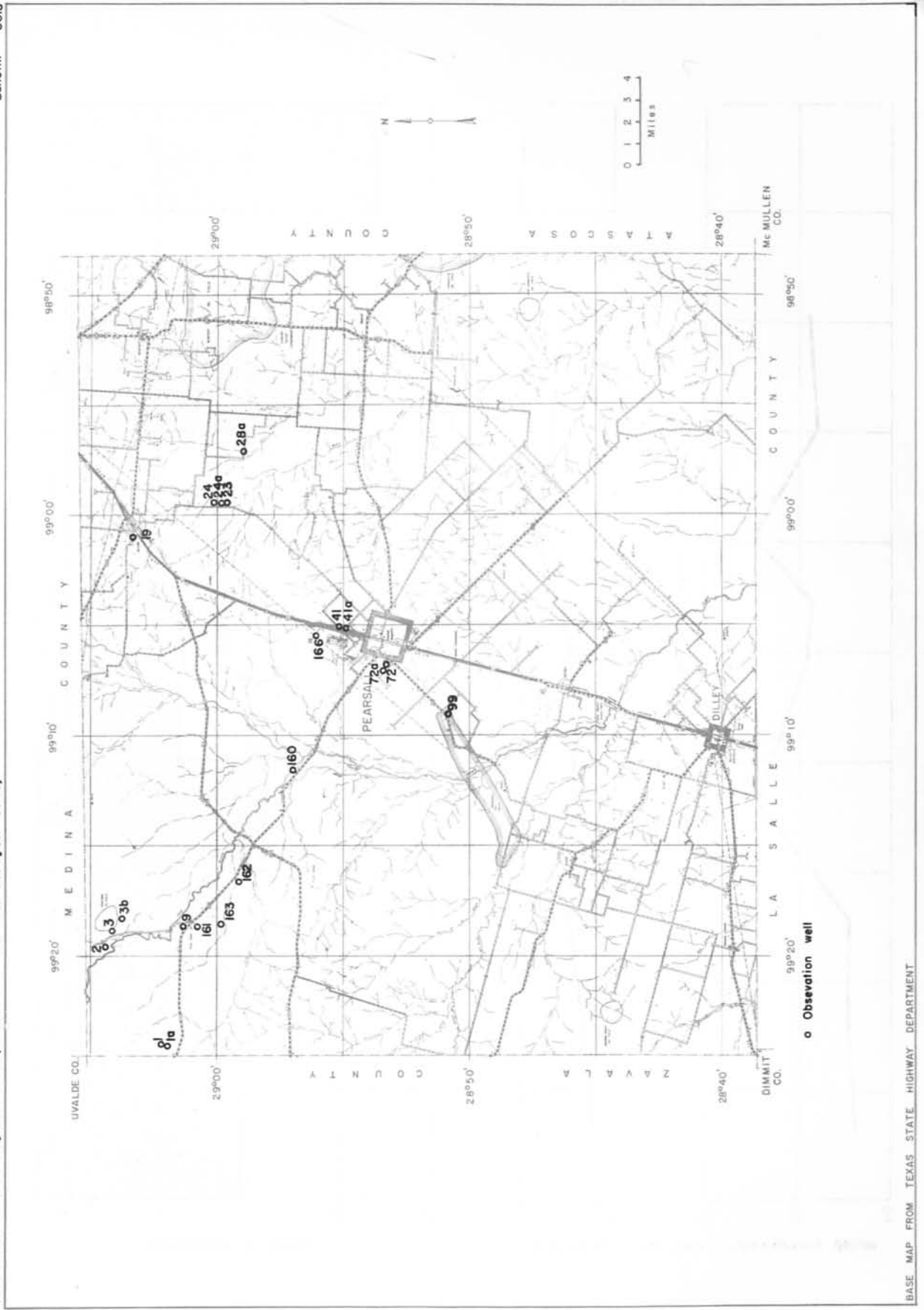
GRAPHS SHOWING MEASURED WATER LEVELS IN TWO WELLS IN ATASCOSA COUNTY, AND THE ANNUAL PRECIPITATION AT POTEET, TEXAS

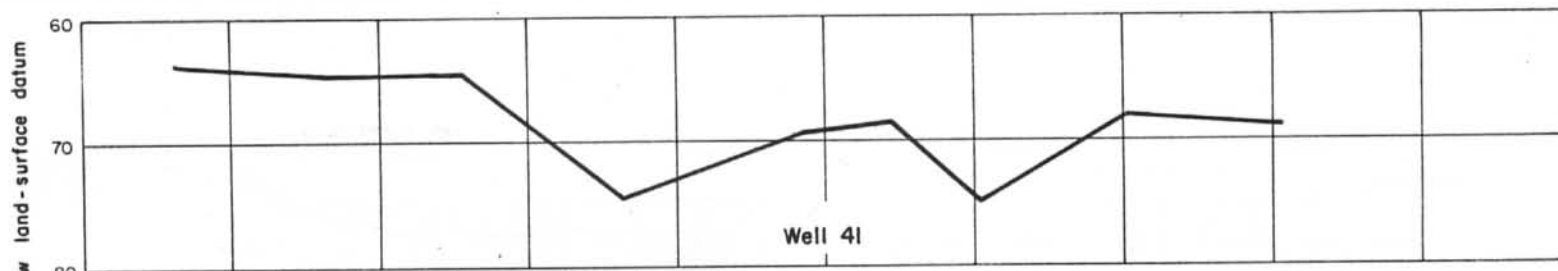
F R I O   C O U N T Y

OFFICE OF THE COUNTY CLERK  
COUNTY OF FRIEO, TEXAS  
CORNER OF MAIN AND WASHINGTON STS., FRIEO, TEXAS

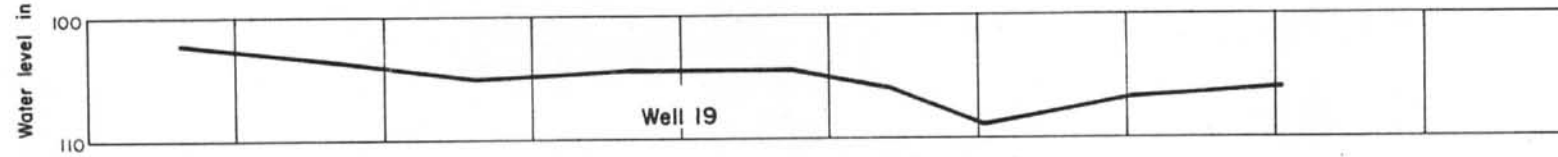
WATER-LEVEL MEASUREMENTS IN FRIO  
COUNTY IN FEET BELOW LAND-SURFACE DATUM

Well	1955		1956		1957		1958		1959		1960	
	Date	Level	Date	Level	Date	Level	Date	Level	Date	Level	Date	Level
1	4/14	109.36	--	--	1/21	121.00	1/16	120.58	--	--	--	--
1a	4/14	99.36	--	--	--	--	--	--	--	--	--	--
2	4/14	67.74	1/10	69.08	1/21	72.23	1/16	71.08	--	--	--	--
3	4/14	91.70	--	--	--	--	--	--	--	--	--	--
3b	4/14	98.33	1/10	100.30	1/21	104.00	1/16	103.85	--	--	--	--
9	4/14	62.12	1/11	59.87	1/21	65.97	1/16	60.17	--	--	--	--
19	4/13	105.71	1/12	109.06	1/20	106.86	1/15	105.98	--	--	--	--
23	4/13	35.11	--	--	1/20	47.32	--	--	--	--	--	--
24	4/13	50.64	--	--	1/20	70.89	--	--	--	--	--	--
24a	4/13	33.11	--	--	--	--	--	--	--	--	--	--
28a	4/13	21.28	1/12	23.75	1/20	37.89	--	--	--	--	--	--
41	5/23	68.73	1/12	74.91	1/20	67.79	1/15	68.63	--	--	--	--
41a	5/23	68.61	1/12	74.73	1/20	67.86	1/15	69.25	--	--	--	--
72	4/14	39.76	1/10	38.82	1/17	38.55	1/16	38.33	--	--	--	--
72a	4/13	39.42	1/10	38.57	1/20	44.00	1/16	40.17	--	--	--	--
99	4/13	63.28	1/11	66.58	--	--	--	--	--	--	--	--
160	4/13	61.84	1/11	62.54	1/20	60.99	1/16	58.36	--	--	--	--
161	4/13	97.26	1/11	96.66	2/21	101.03	1/16	96.95	--	--	--	--
162	4/13	80.99	1/11	79.65	2/21	82.77	1/16	75.23	--	--	--	--
163	4/13	98.37	--	--	2/21	99.50	1/16	104.02	--	--	--	--
166	4/13	106.82	--	--	1/20	107.10	1/15	104.10	--	--	--	--

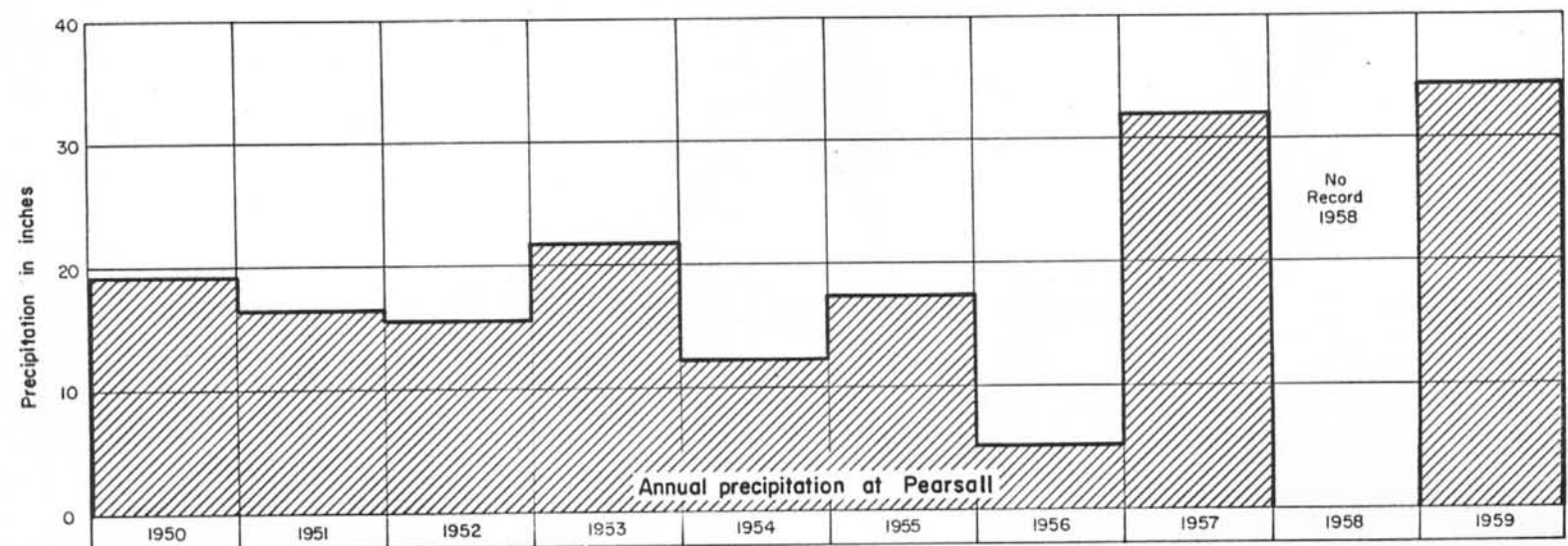




Well 41  
Developed in the Mount Selman formation



Well 19  
Developed in the Garrizo sand



Annual precipitation at Pearsall

GRAPHS SHOWING MEASURED WATER LEVELS IN TWO WELLS IN FRIO COUNTY, AND THE ANNUAL PRECIPITATION AT PEARSALL, TEXAS

- 10 -



