

EXPLANATION

Well Symbols

- Public Supply
- Industrial
- Irrigation
- Domestic or stock
- Oil or gas test
- Unused or destroyed
- Solid circle indicates flowing well
- 503
- Line below number indicates chemical analysis shown in Table 6

A ————— **A'**
Line showing location of geologic sections

Geologic contact, dashed where approximate

Geologic Symbols

- Tg**
Goliad Sand
Sand interbedded with gravel, sandy clay, and clay. Not known to yield water to wells in La Salle and McMullen Counties
- Tlo**
Lagarto Clay and Oakville Sandstone
Clay, sandy clay, and thin beds of sand in the upper part. Sand, and sandstone, sandy clay, bentonitic clay, and silt in the lower part. Yields small quantities of water to wells
- Tct**
Cotahaula Tuff
Primarily tuffaceous clay and tuff. Locally contains sandy clay, tuffaceous sand and clay, bentonitic clay, and thin beds of sand and conglomerate. Yields small quantities of water to wells
- Tf**
Frio Clay
Clay, sandy clay, and some sand. The clay contains bentonite and gypsum. Not known to yield water to wells
- Tj**
Jackson Group
Clay, sand, silt, bentonitic clay, and tuff. Yields small quantities of water to wells
- Ty**
Yegua Formation
Gypsiferous clay, sand, and thin beds of lignite. Yields small quantities of water to wells in outcrop
- Tcm**
Cook Mountain Formation
Clay and shale, glauconitic sand, sandy clay, and limestone concretions. Yields small quantities of water to wells in western La Salle County
- Ts**
Sparto Sand
Sand and clay. Yields small to moderate quantities of water to wells in western La Salle County

Base compiled from general highway maps of the Texas Highway Department

Geology adopted from U.S. Geological Survey Geologic Map of Texas, 1937

Plate I
Geologic Map of La Salle and McMullen Counties, Texas,
Showing Locations of Wells

U.S. Geological Survey in cooperation with the Texas Water Commission

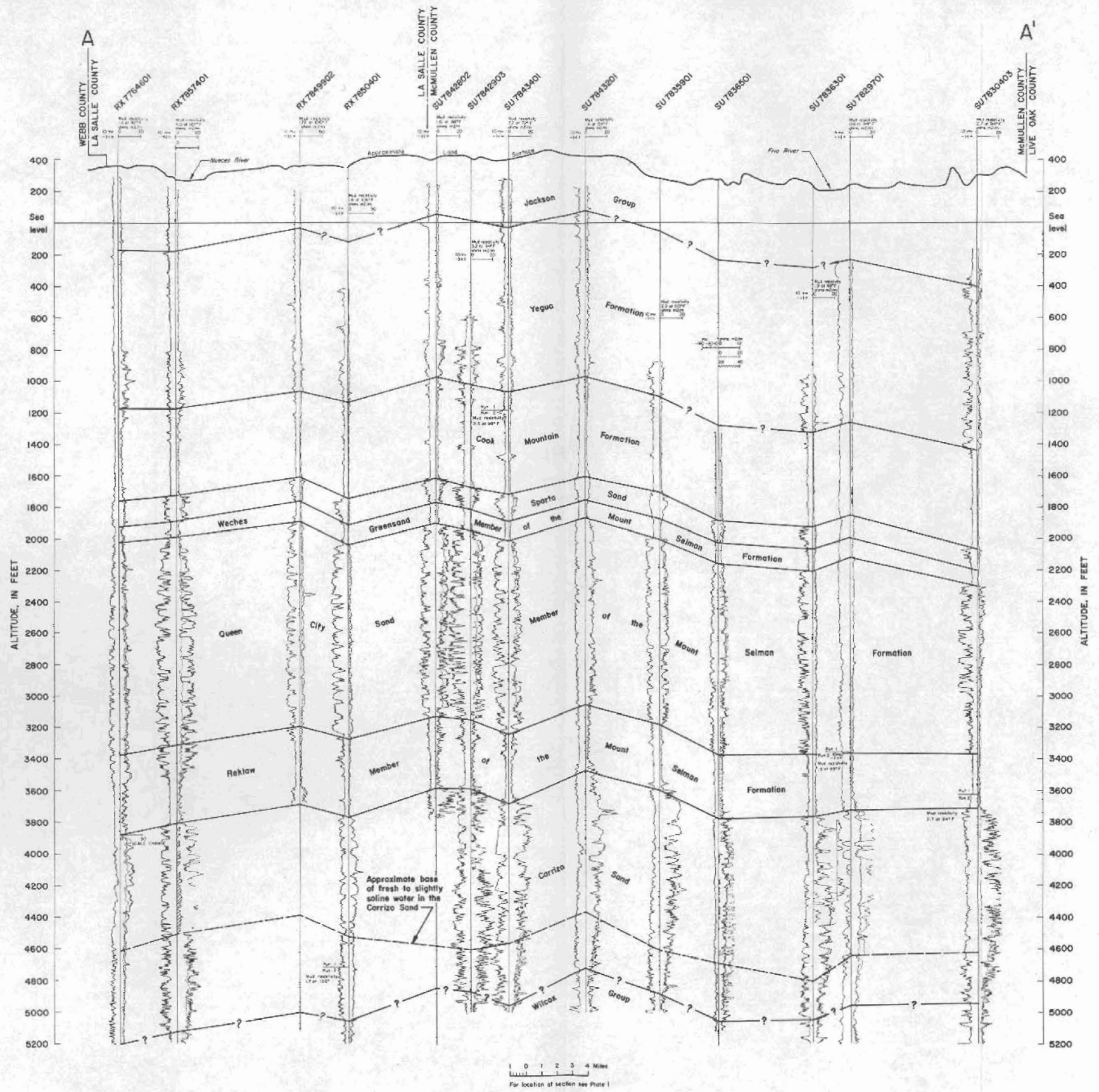


Plate 2
 Geologic Section A-A', La Salle and McMullen Counties
 U.S. Geological Survey in cooperation with the Texas Water Commission

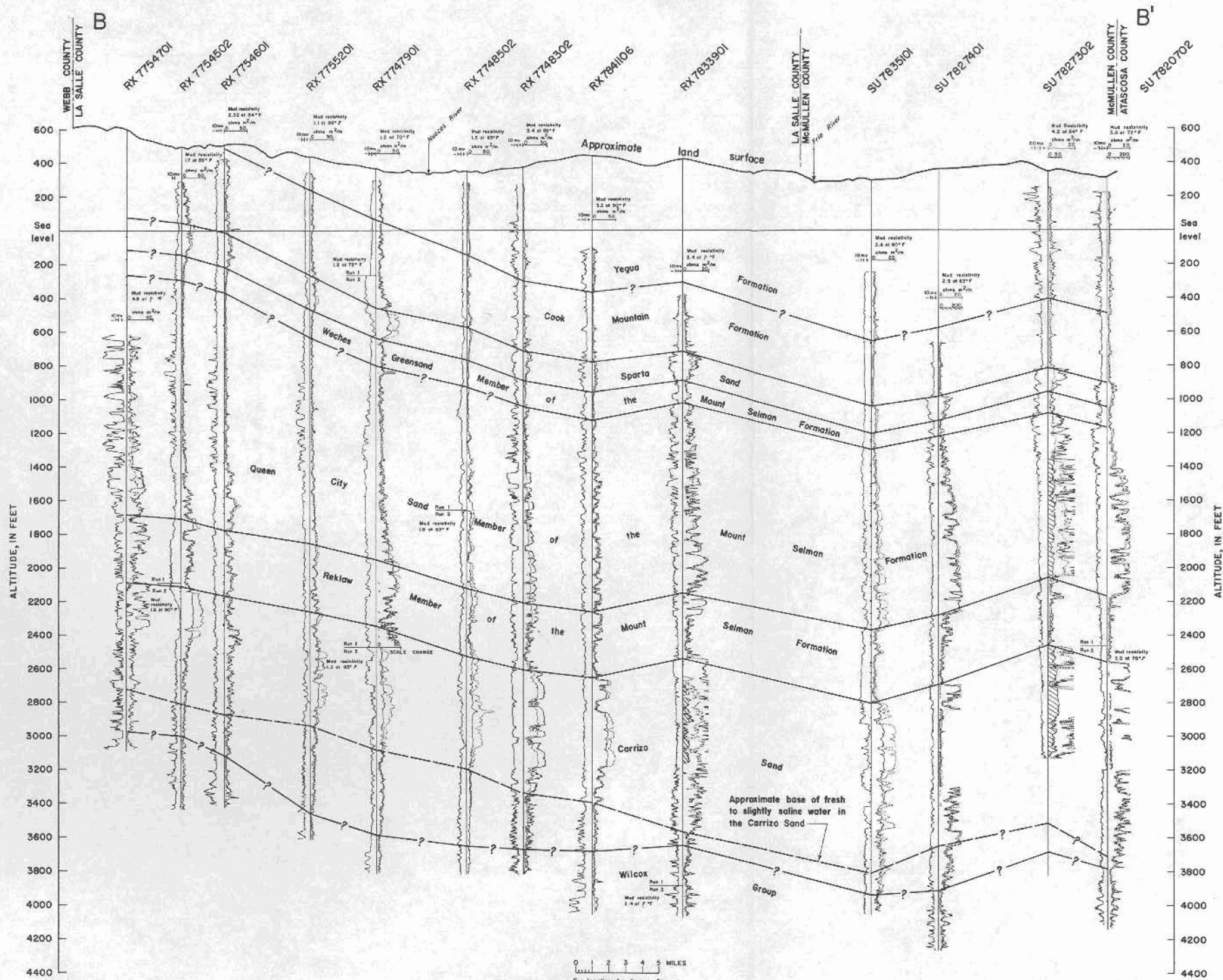


Plate 3
 Geologic Section B-B', La Salle and McMullen Counties
 U.S. Geological Survey in cooperation with the Texas Water Commission

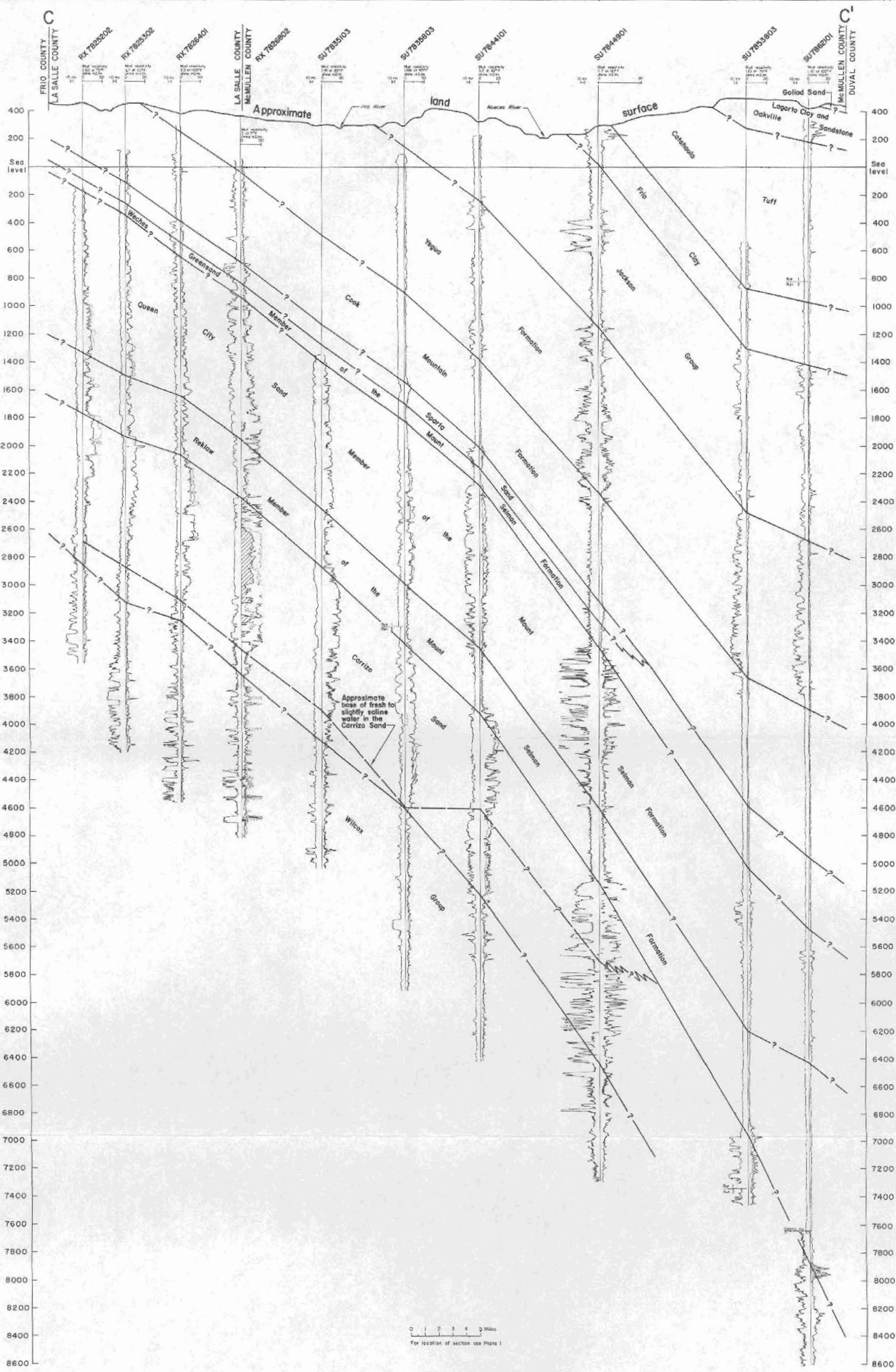


Plate 4
 Geologic Section C-C', La Salle and McMullen Counties

U.S. Geological Survey in cooperation with the Texas Water Commission

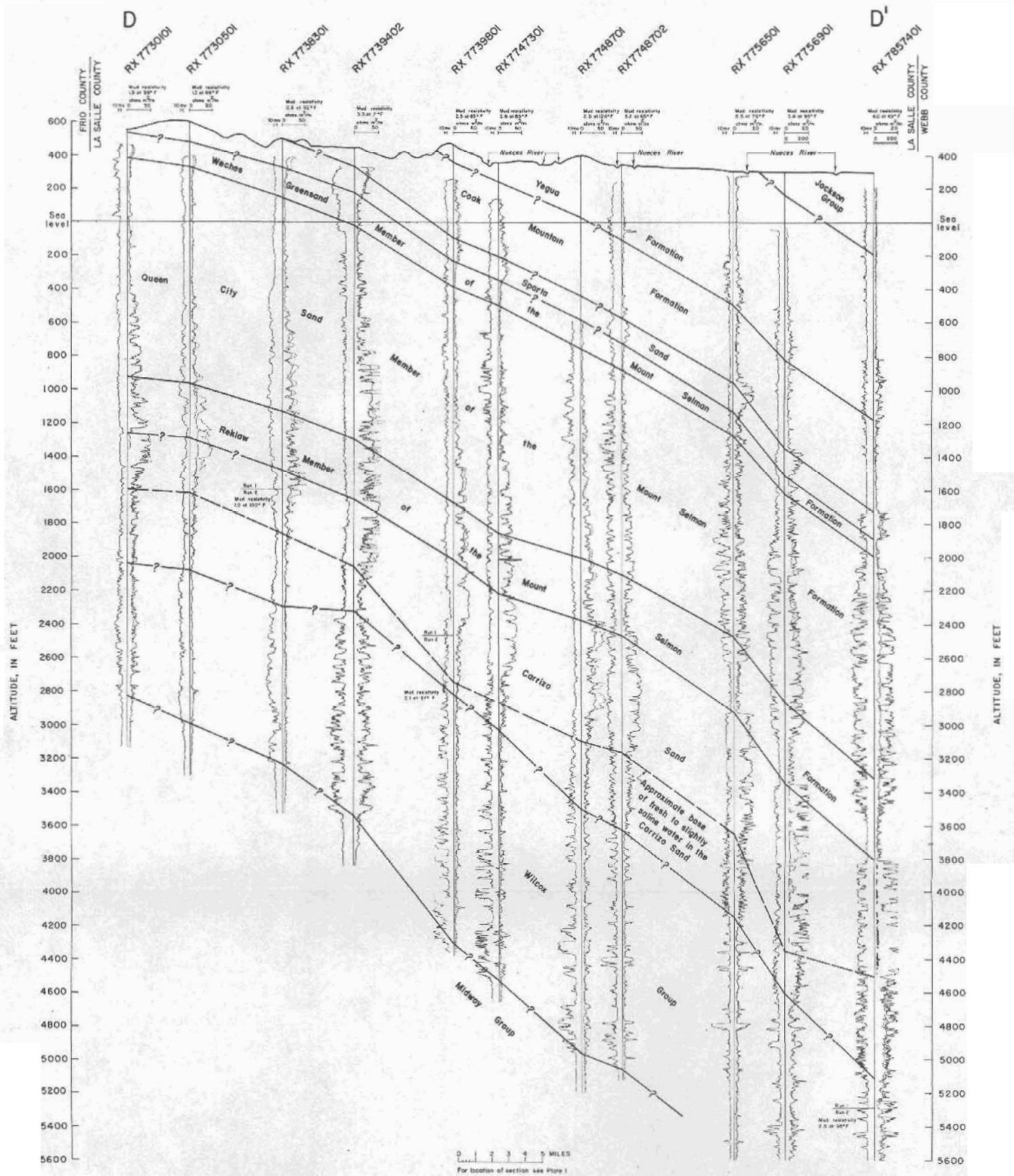


Plate 5
 Geologic Section D-D', La Salle County

U.S. Geological Survey in cooperation with the Texas Water Commission