



Biology Objective

- Determine and maintain flows necessary to support key aquatic habitats and native species and biological communities known to occur in the river and riparian zones

Biology

- Instream biological community
- Instream habitat
- Riparian habitat

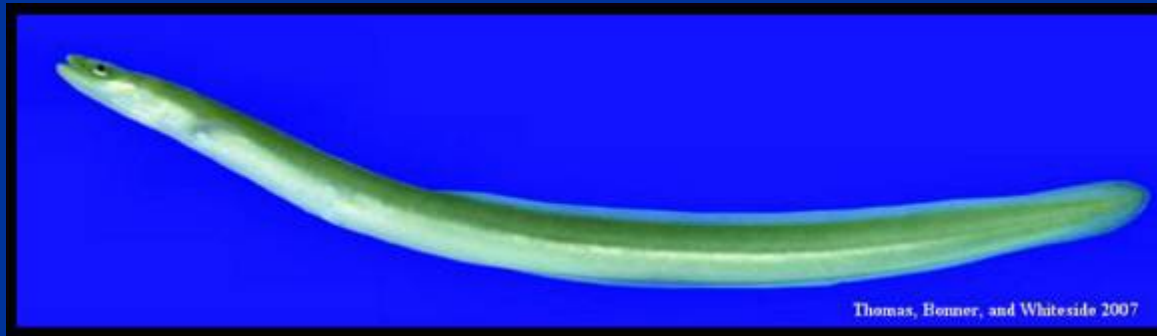
Biology

- Instream biological community
- Instream habitat
- Riparian habitat

Indicator Species



Indicator Species



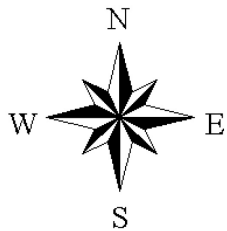
Other Species of Interest?

Biology

- Instream biological community
- Instream habitat
- Riparian habitat



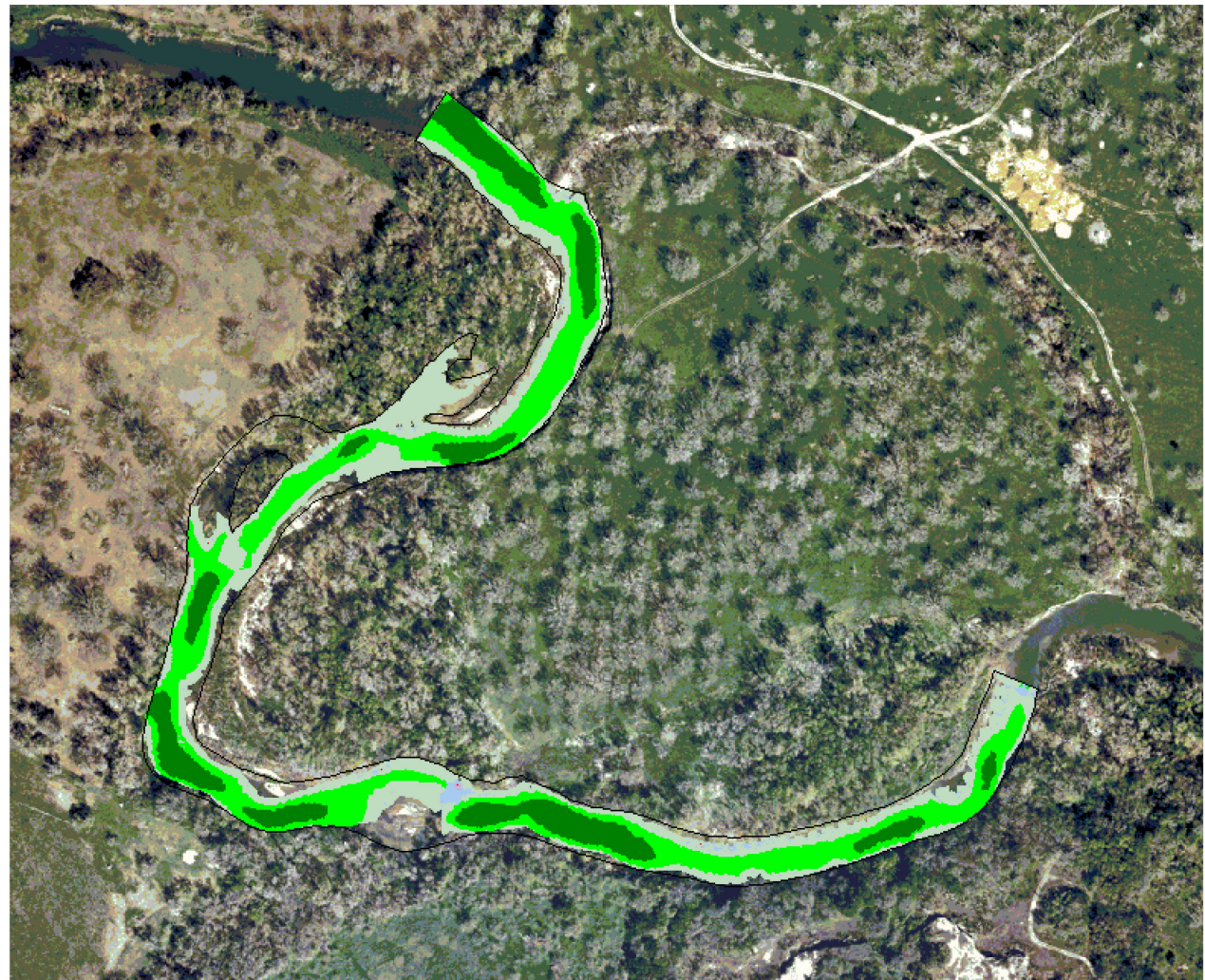
Habitat Changes with Flow



**Flow =
100 cfs**

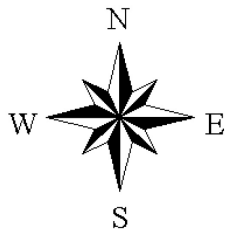
Mesohabitat

-  Deep Pool
-  Medium Pool
-  Shallow Pool
-  Run
-  Slow Riffle
-  Fast Riffle
-  Dry

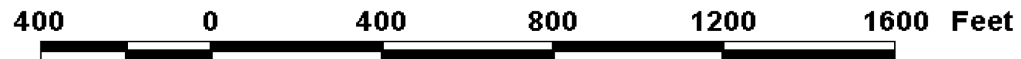
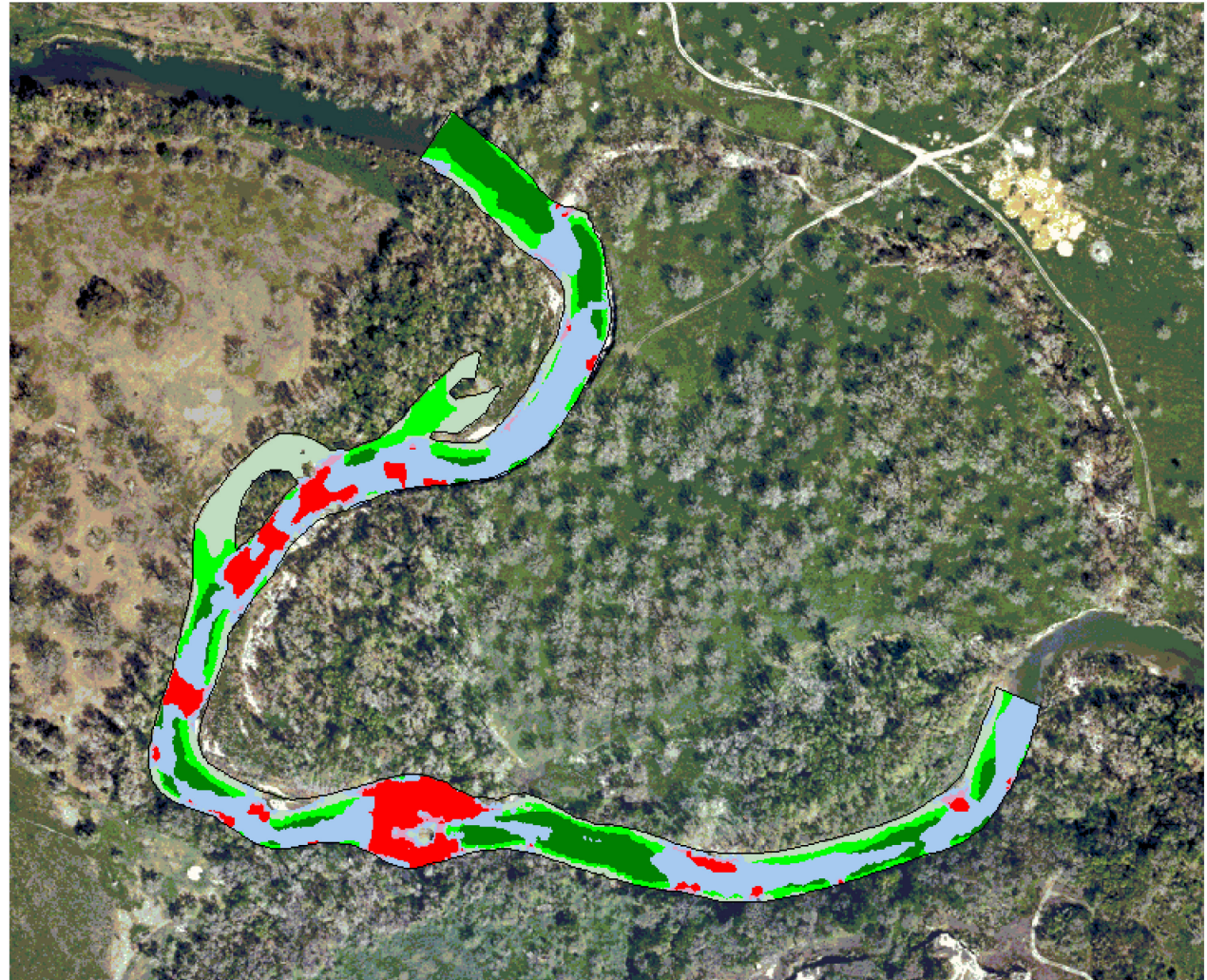


400 0 400 800 1200 1600 Feet

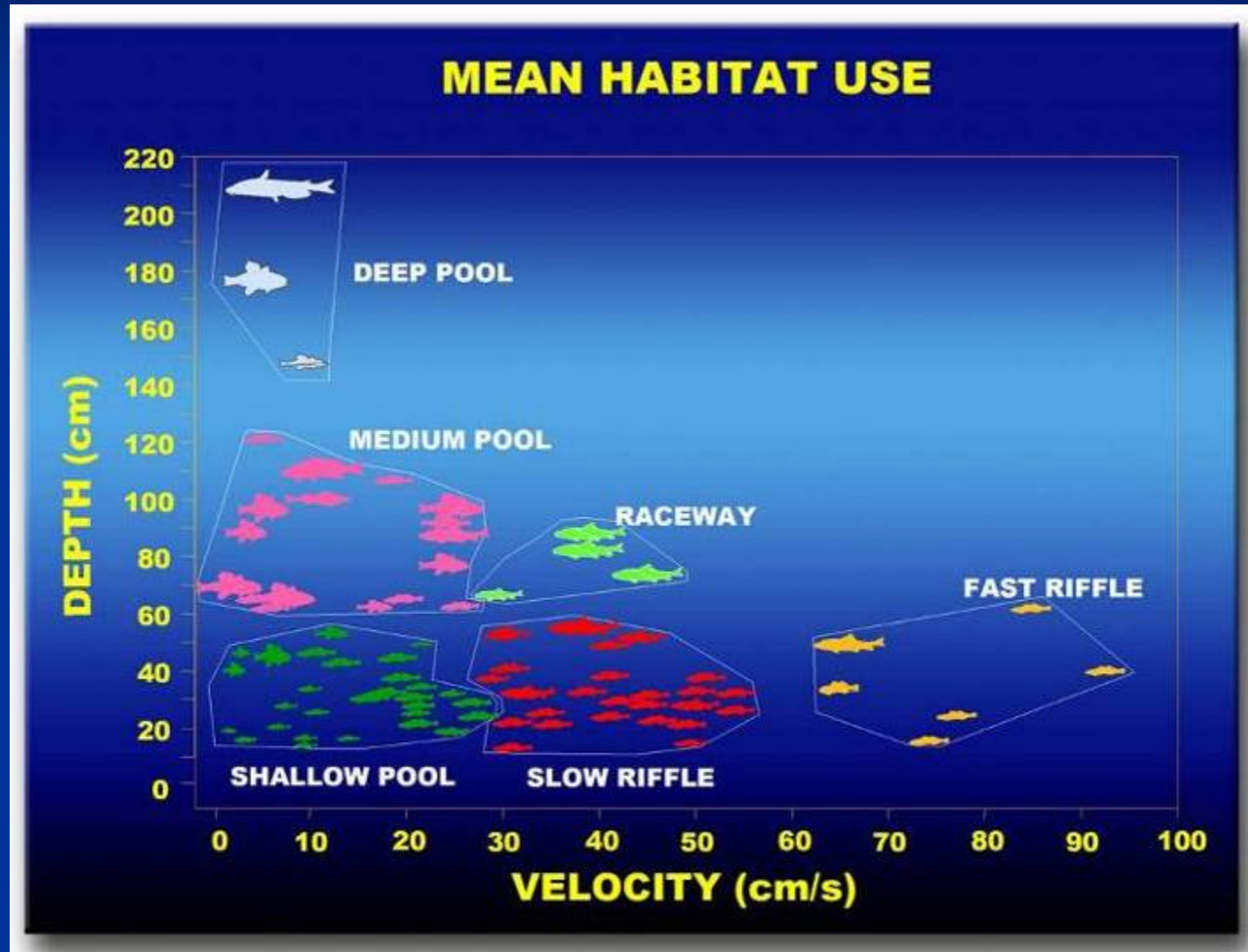
Habitat Changes with Flow



**Flow =
1,000 cfs**



Different Fish Use Different Habitats



Fish Sampling



Habitat Suitability Sampling



Biology

- Instream biological community
- Instream habitat
- Riparian habitat

Baseline Riparian Studies

Purpose:

- Characterize extent and condition of riparian habitats

