

Collect and Evaluate Baseline Information

1. Completed Studies

GIS Database of Historic Data/Studies
Assessment of Hydrologic Software
Supplement Existing Biological Data
Analysis of Existing Biological Data
Geomorphic Classification
Evaluation of Geomorphic Equilibrium
Development of Sediment Budgets
Mussel Survey

2. Ongoing Studies

Mussel Habitat
Geomorphic Units
River/Floodplain Interactions
Historic FEMA/HEC-RAS X-S
USGS Streamgaging X-S

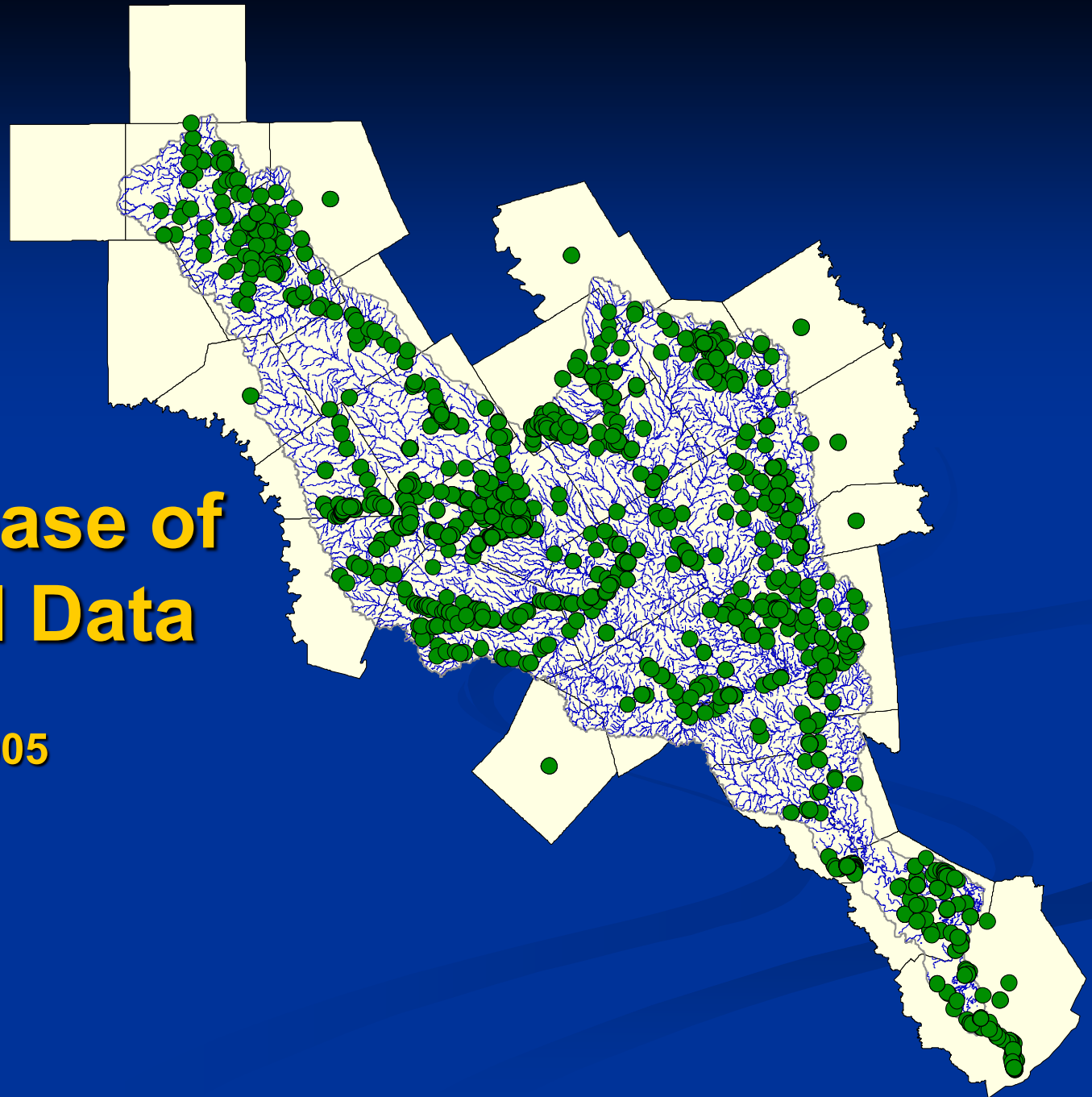
<http://www.twdb.state.tx.us/instreamflows>





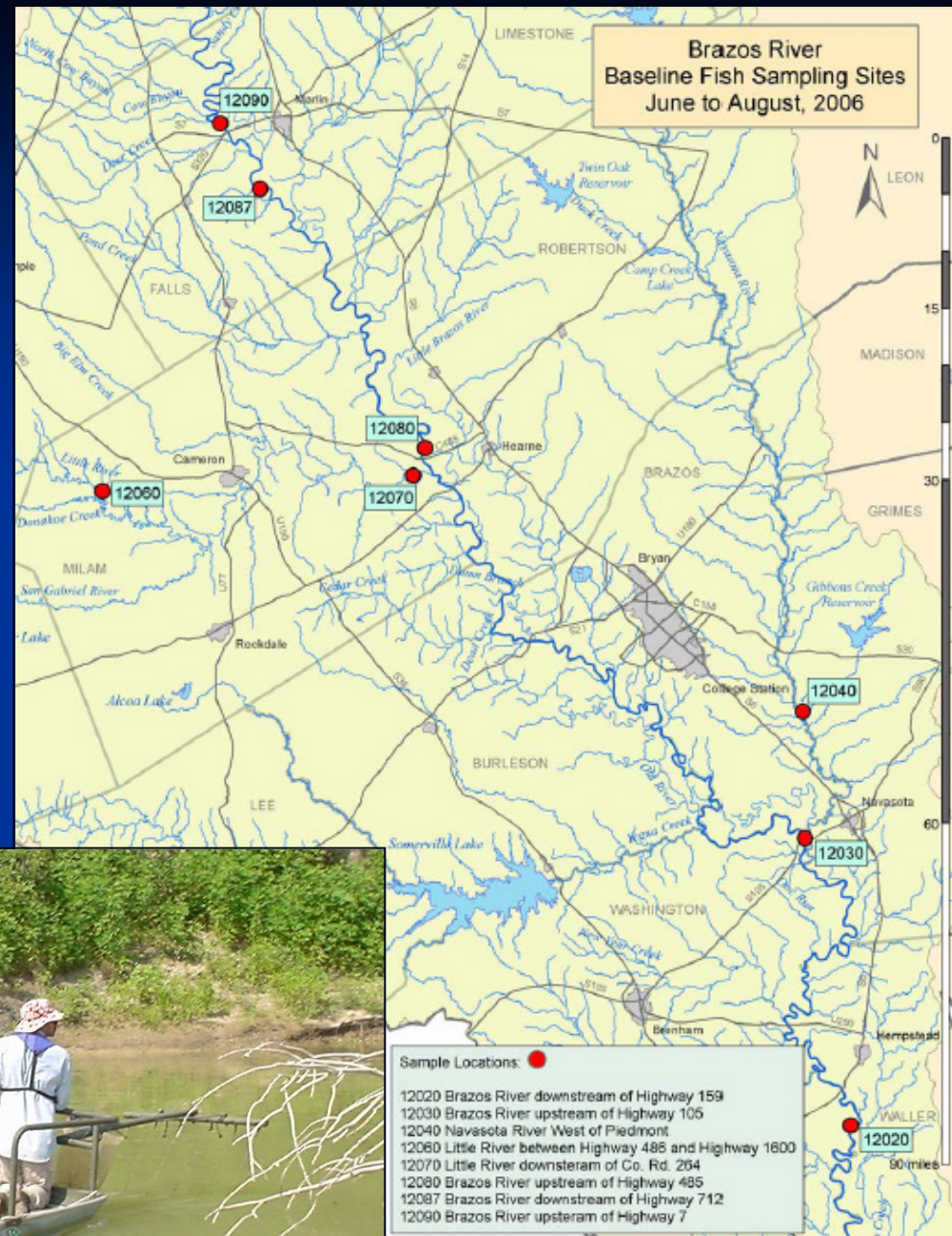
GIS Database of Historical Data

BRA-TX
October 2005



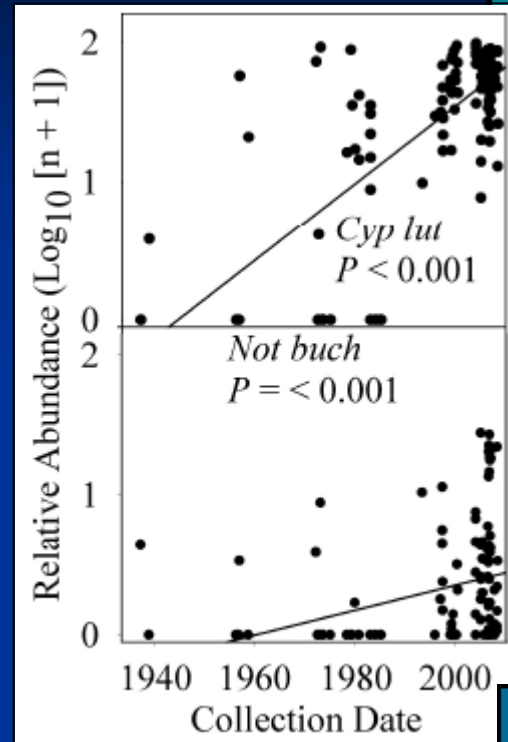
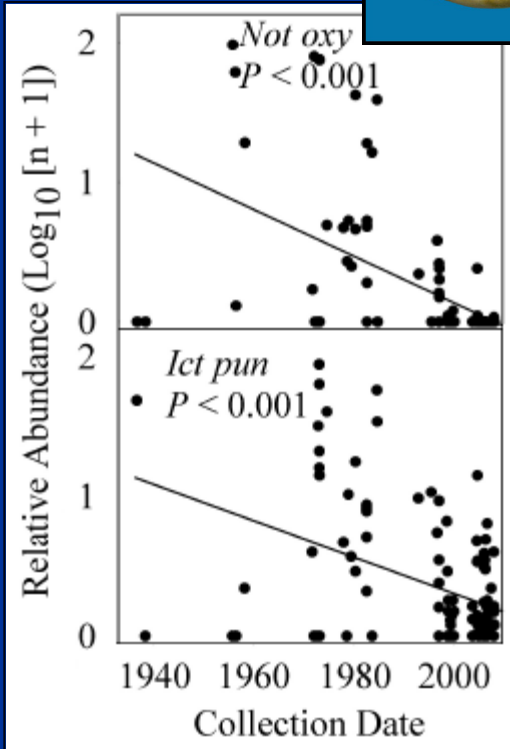
Supplement Existing Biological Data

BRA & TPWD
January 2007



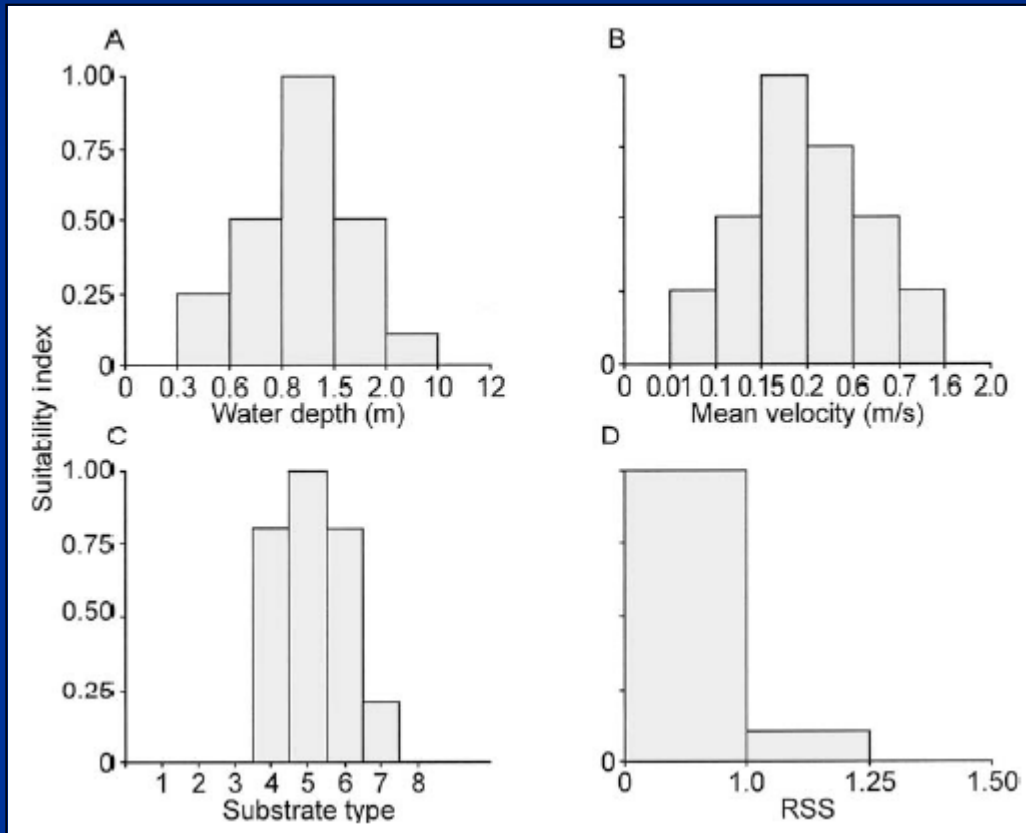
Analysis of Existing Biological Data

Bonner, TSU
July 2007



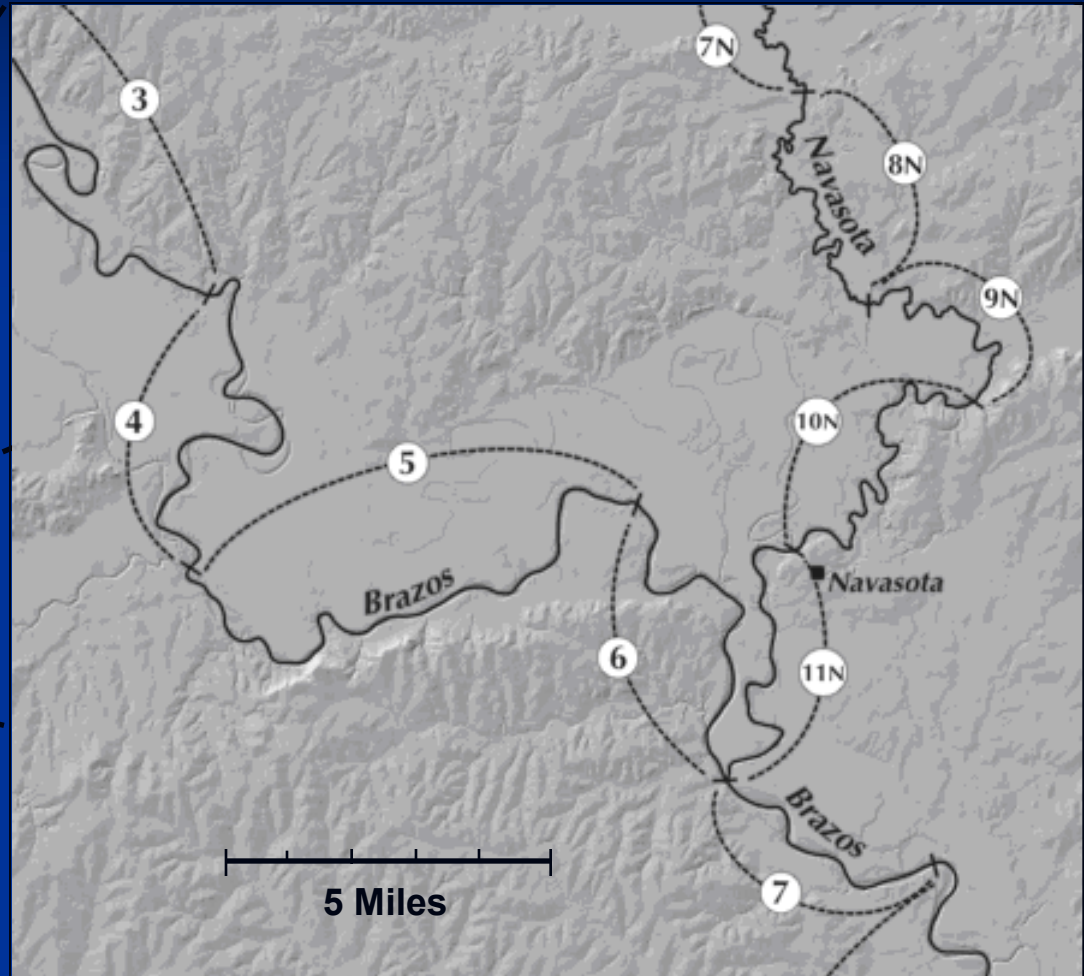
Substrate and Hydrodynamic Conditions of Mussel Beds

Kennedy, UNT
December 2008



Geomorphic Classification

Phillips
November 2007



Surface / Groundwater Interactions

USGS
2007

August 2006

March 2006

	Brazos River alluvium aquifer
	Gaining reach
	Losing reach
	Site and identifier that define reach (See table 8)

